

December 6, 2024

IDEA Exterior Fencing Improvements at IDEA Donna and IDEA San Benito
CSP#19-FNCTX-1224

GMS ARCHITECTS
BROWNSVILLE, TEXAS 78526
(956) 546-0110

ADDENDUM NO. 2

A. PURPOSE AND INTENT

This addendum is issued for the purpose of modifying the plans and specifications for the IDEA Exterior Fencing Improvements at IDEA Donna and IDEA San Benito - CSP#19-FNCTX-1224.

This addendum shall become part of the contract, and all CONTRACTORS shall be bound by its content. All aspects of the specifications and drawings not covered herein shall remain the same.

The General Conditions and the Special Conditions of the specifications shall govern all parts of the work and apply in full force to this addendum.

B. SCOPE

I. CLARIFICATION:

- Vinyl chain link fencing will be green in color.
- Refer to RFI Questions & Answers (2 Pages)
- GC to provide temporary fencing during fence installation for security.
- Single gate openings will be 4'-0" wide. Pair of gate openings will be 7'-0" wide.

II. SPECIFICATIONS:

- Delete Section 01010 – General Requirements (3 Pages) which references the Edinburg Cafeteria. Specification pages 148-150.
- The Betterment Fund / Owners Contingency Allowance included in the base bid proposal shall be \$30,000.00 total.
- Add Section 104400 – Specialty Signs – 2 Pages to construction documents.
 - Provide signage at each gate opening.

III. PLANS:

- Delete Sheets A1.01 and SB1.01 and replace with attached Sheets A1.01 and SB1.01.

Idea Public Schools Exterior Fencing Improvements-Access Control System RFI's

- 1) Do the existing Verkada controllers (AC-42) have spare capacity that is sufficient for this project without the necessity for additional controllers? **Yes, there is sufficient capacity**
- 2) Will the Idea IT dept provide the network integration to the existing system on the Idea network, network switches, Verkada software, licenses and programming services for making the access control system fully functional after the additional card readers and cable are installed? **Yes, the integration will be performed by IDEA IT department**
- 3) What is the card reader backplate engraving information (owner's standard naming convention) specifically? What needs to be provided? **Information will be provided after award**
- 4) Please clarify the Enclosure Options. On the drawings, the buildings are noted with MDF locations in relation to the new gate locations.
- 5) Is there any specific alarm system or lockdown integration on this project? The specifications mention these elements but the project walk through and pre-bid did not include any requirements pertaining to these applications. **IDEA IT will program the integration**
- 6) Is the low voltage cable for the access control installed inside the buildings required to be in conduit, J-hooks or can it be installed on the red iron above the ceiling tile? **above ceiling tiles**
- 7) Is there a specific model number for the prox cards? Also, the exact card number for the starting continuation of cards for each campus is necessary to avoid the duplication of card numbers in the system. **No cards are needed.**

Roan Gomez

From: Roy Garrison III <roy3@hurricanefencetx.com>
Sent: Friday, December 6, 2024 11:57 AM
To: Roan Gomez; facprocurement@ideapublicschools.org
Subject: Fw: IDEA DONNA & SAN DENITO RFI'S
Attachments: IDEA PUBLIC SCHOOLS RFI-A1.pdf

Morning. RFI questions below and attached from Superior Alarms.

1. Sheet E1.02 entry side gate elevation shows card reader to be mounted in the mullion in the center of the gate. Can this be mounted to the post on the side instead of the removable mullion in the middle? **card readers will be installed on jambs.**
2. Is the removable mullion required for the chainlink fence or only the aluminum fence option? **Both conditions**
3. Can galv. steel powder coated black posts and header be used for the aluminum egress gates instead of aluminum?
Yes, posts must be galvanized and powder coated.
4. Please confirm the type of hinges, I don't see a spec.
5. Please confirm the model of the active and non active panic bars
Yes, posts must be galvanized and powder coated.
6. Will the school district repair and / or relocate sprinkler heads that may be in the way of the fence?
School will locate the lines and head locations. The fence location will be adjusted to miss the lines.
7. Will the school district identify the location of all underground lines?
Repairs afterwards would be by GC.
8. Does the contractor haul off and dispose of the existing fence materials?
Yes, unless the campus wants to repair other sections with salvage. The additional scope will be covered the allowance.
9. Hardware supplier mentioned 08ND is not a valid part number....There is a 08BN and a 08DN but the 08DN does not normally go with the V40. Are the panic bars electric dogging or electric latch retraction.
08BN Weatherized Electric Latch Retract with V40 Rim Exit Device.

Thank you,

Roy

Hurricane Fence Company
3440 Spur 54
Harlingen, Texas
Tel: 956-423-8364
Fax: 956-425-1306

----- Forwarded Message -----

SECTION 104400 SPECIALTY SIGNS

PART 1 GENERAL

RELATED DOCUMENTS:

Drawings and general provisions of the Contract, including General and Supplementary Conditions and Division 1 Specification sections, apply to work specified in this section.

DESCRIPTION OF WORK:

Extent of specialty signs is shown on drawings.

Forms of specialty signs required include the following:

Exterior Panel signs

QUALITY ASSURANCE:

Uniformity of Manufacturer: For each sign form and graphic image process indicated, furnish products of a single manufacturer.

SUBMITTALS:

Product Data: Submit manufacturer's technical data and installation instructions for each type of sign required.

Samples: Submit samples of each sign form and material showing finishes, colors, surface textures and qualities of manufacture and design of each sign component, including graphics.

Shop Drawings: Submit shop drawings for fabrication and erection of specialty signs. Include plans, elevations, and large-scale details of sign wording and lettering layout. Show anchorages and accessory items. Furnish location template drawings for items supported or anchored to permanent construction.

PART 2 PRODUCTS

ACCEPTABLE MANUFACTURERS:

Panel Signage

Manufacturers of Rooms Signs and Address Numbers:

Basis of Design: Corpus Christi Stamp Works
Bayuk Graphic Systems, Inc.
MULTI-graphics, Inc.

MATERIALS:

Plastic Laminate: Provide high pressure plastic laminate engraving stock with face and core plies in contrasting colors, in finishes and color combinations indicated. Manufacturer standard colors.

FABRICATION OF PANEL SIGNS:

Fabricate panels signs to comply with the requirements indicated for materials, thicknesses, finishes, colors, designs, shapes, sizes and details of construction. Provide and install, one per door.

Produce smooth, even, level sign panel surfaces, constructed to remain flat under installed condition within a tolerance of plus or minus 1/16" measured diagonally from corner to corner.

Panel Signs: Fabricate unframed panel signs with edges mechanically and smoothly finished to conform to following requirements:

A. Character Proportion. Letters and numbers on signs should have a width to height ratio between 3:5 and 1:1 and a stroke width to height ratio between 1:5 to 1:10 utilizing an uppercase "X" for measurement.

B. Color Contrast. Characters and symbols shall contrast with their background.

C. Tactile Characters and Symbols. Characters, symbols, or pictographs on signs required to be tactile, shall be raised 1/32 inch minimum. Letters and numbers refer to plans for text height at specific locations. Font: Helvetica 721.

D. Exterior Signs:

A. Provide weather rated exterior sign at each of the exterior gates:

1. GATE 1, GATE 2, ETC.
2. Refer to drawing for quantity.

B. Include braille message as required by ADA.

C. Letter Font Size: 6"

FINISHES:

Colors and Surface Textures: For exposed sign materials which require selection of materials with integral or applied colors, surface textures or other characteristics related to appearance, provide color matches indicated, or if not otherwise indicated, as selected by the Architect from the manufacturer's standards.

PART 3 EXECUTION:

INSTALLATION:

General: Locate sign units and accessories where shown or scheduled, using mounting methods of type described and in compliance with the manufacturer's instructions, unless otherwise indicated.

Install signs level, plumb and at the height indicated, with sign surfaces free from distortion or other defects of appearance.

Panel Signs:

Wall Mounted Units: Attach panel signs to wall surfaces using the methods indicated below:

Exterior:

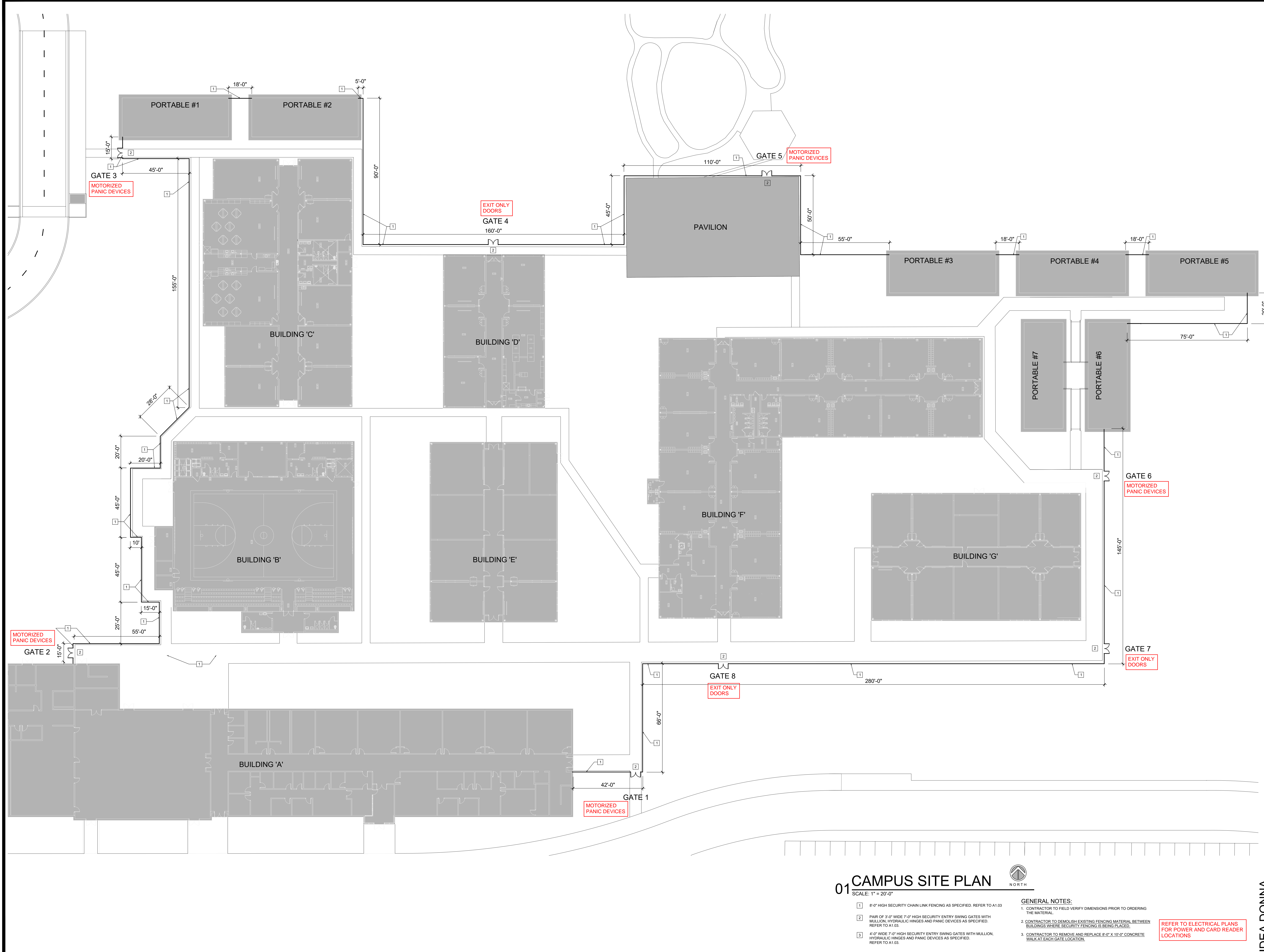
Mechanically fasten securely to substrate. Fastener should be appropriate for substrate.

Flush Mounting (FM): Mount letters backs in contact with wall surface.

CLEANING AND PROTECTION:

At completion of the installation, clean soiled sign surface in accordance with the manufacturer's instructions. Protect units from damage until acceptance by the Owner.

END OF SECTION 10440



01 CAMPUS SITE PLAN
 SCALE: 1" = 20'-0"
 NORTH

- 1 6'-0" HIGH SECURITY CHAIN LINK FENCING AS SPECIFIED. REFER TO A1.03
- 2 PAIR OF 3'-0" WIDE 7'-0" HIGH SECURITY ENTRY SWING GATES WITH MULLION, HYDRAULIC HINGES AND PANIC DEVICES AS SPECIFIED. REFER TO A1.03.
- 3 4'-0" WIDE 7'-0" HIGH SECURITY ENTRY SWING GATES WITH MULLION, HYDRAULIC HINGES AND PANIC DEVICES AS SPECIFIED. REFER TO A1.03.

GENERAL NOTES:
 1. CONTRACTOR TO FIELD VERIFY DIMENSIONS PRIOR TO ORDERING THE MATERIAL.
 2. CONTRACTOR TO DEMOLISH EXISTING FENCING MATERIAL BETWEEN BUILDINGS WHERE SECURITY FENCING IS BEING PLACED.
 3. CONTRACTOR TO REMOVE AND REPLACE 8'-0" X 10'-0" CONCRETE WALK AT EACH GATE LOCATION.

REFER TO ELECTRICAL PLANS FOR POWER AND CARD READER LOCATIONS

IDEA PUBLIC SCHOOLS
EXTERIOR FENCING IMPROVEMENTS
 DONNA, TEXAS

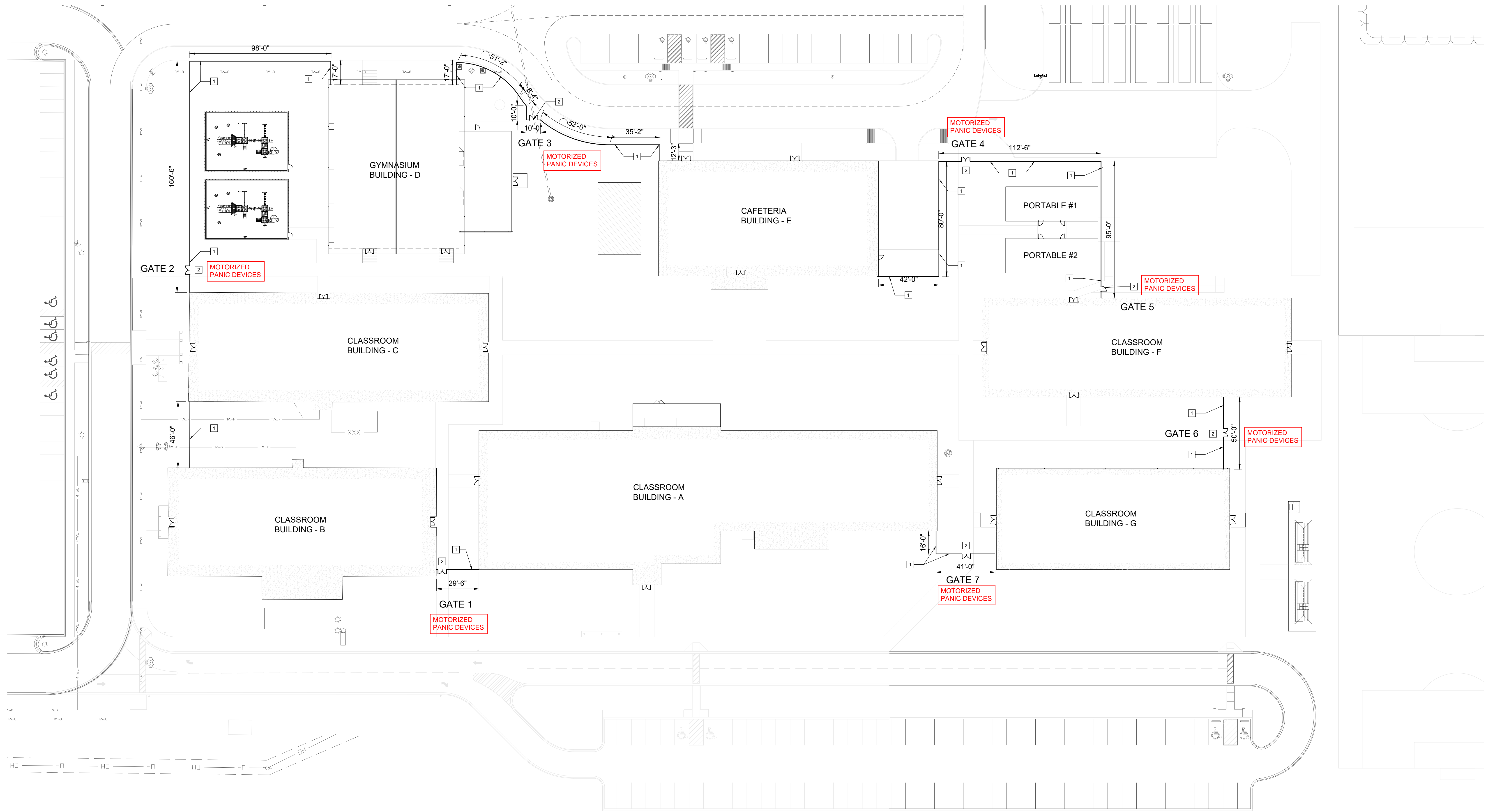


© Copyright 2024
 Gomez Mendez Saenz Inc.
 Architects-Planners
 Interior Designers

Date: November 2024
 Scale: As Noted
 Project Architect: Roan Gomez, AIA
 Drawn By: RN
 Job No: IDEA Exterior Fencing
 Sheet:

IDEA DONNA

A1.01



01 OVERALL SITE PLAN PLAN NORTH

- SCALE 1" = 30'-0"
- 1 8'-0" HIGH SECURITY CHAIN LINK FENCING AS SPECIFIED. REFER TO A1.03
 - 2 PAIR OF 3'-0" WIDE 7'-0" HIGH SECURITY ENTRY SWING GATES WITH MULLION, HYDRAULIC HINGES AND PANIC DEVICES AS SPECIFIED. REFER TO A1.03.
 - 3 4'-0" WIDE 7'-0" HIGH SECURITY ENTRY SWING GATES WITH MULLION, HYDRAULIC HINGES AND PANIC DEVICES AS SPECIFIED. REFER TO A1.03.
- GENERAL NOTES:**
- 1 CONTRACTOR TO FIELD VERIFY DIMENSIONS PRIOR TO ORDERING THE MATERIAL.
 - 2 CONTRACTOR TO DEMOLISH EXISTING FENCING MATERIAL AND CONCRETE FOOTINGS BETWEEN BUILDINGS WHERE SECURITY FENCING IS BEING PLACED.
 - 3 CONTRACTOR TO REMOVE AND REPLACE 8'-0" X 10'-0" CONCRETE WALK AT EACH GATE LOCATION.

REFER TO ELECTRICAL PLANS FOR POWER AND CARD READER LOCATIONS

No.	REVISIONS	BY
12/6/2024		RN

GMS ARCHITECTS
 1150 Paredes Line Rd.
 Brownsville, TX 78526
 (956) 546-0110
 fax (956) 546-0196

IDEA PUBLIC SCHOOLS
EXTERIOR FENCING IMPROVEMENTS
 SAN BENITO, TEXAS

IDEA
 Public Schools



© Copyright 2024
 Gomez Mendez Saenz Inc.
 Architects-Planners
 Interior Designers

Date: November 2024
 Scale: As Noted
 Project Architect: Roan Gomez, AIA
 Drawn By: RN
 Job No: IDEA Exterior Fencing
 Sheet:

SB1.01