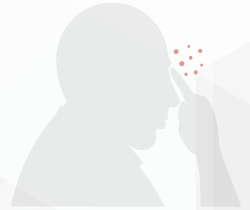


How to Tell the Difference between
**The Flu and
COVID-19**
Do you have a fever of 100.4° F (38° C)?



YES

Do you
have difficulty
breathing?

YES

NO

**You MAY
have COVID-19**

Other Symptoms:

- Cough (usually dry)
- Fatigue
- Headache
- Muscle ache
- Sore throat or Chills
- New loss of taste or smell
- Congestion or Runny nose
- Nausea or vomiting
- Diarrhea

**You MAY
have the flu**

Other Symptoms:

- Cough
- Fatigue
- Weakness
- Muscle aches
- Sore throat
- Chills

*These are **COMMON SYMPTOMS**, which may vary for different people.

Don't Guess Take the Test!!! Free testing is available sign up on hcptx.org or call 832-927-7575.



VISIT WWW.HCPHTX.ORG