

# STATE OF TEXAS ASSESSMENTS OF ACADEMIC READINESS

## Summary Report

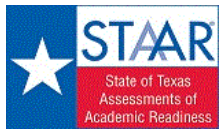
### ALGEBRA I

#### All Students

District: 108-807 IDEA PUBLIC SCH

Report Date: SPRING 2018  
Date of Testing: SPRING 2018

Administration Summary			Number of Students Tested	Average Scale Score	Did Not Meet		Approaches		Meets		Masters		Results for Each Reporting Category									
					#	%	#	%	#	%	#	%	1		2		3		4		5	
Number	Percent												Number of Items Tested									
Students Tested		2806	100										11		12		14		11		6	
Students Not Tested																						
Absent		4	0																			
Other		10	0																			
Total Documents Submitted		2820	100																			
Legend			--- = No Data Reported For Fewer Than Five Students																			
			Avg. # of Items / % Correct																			
			#	%	#	%	#	%	#	%	#	%	#	%	#	%	#	%	#	%	#	%
<b>All Students</b>			2806	4200	231	8	2575	92	1793	64	1083	39	6.9	63	8.0	67	9.6	68	7.4	67	4.3	71
Male			1361	4177	133	10	1228	90	831	61	513	38	6.7	61	8.0	67	9.4	67	7.3	66	4.2	70
Female			1444	4222	98	7	1346	93	961	67	570	39	7.1	65	8.0	67	9.8	70	7.5	68	4.3	72
No Information Provided			1	---	---	---	---	---	---	---	---	---	---	---	---	---	---	---	---	---	---	---
Hispanic/Latino			2627	4205	207	8	2420	92	1692	64	1021	39	7.0	63	8.1	67	9.6	68	7.4	67	4.3	71
American Indian or Alaska Native			0	---	---	---	---	---	---	---	---	---	---	---	---	---	---	---	---	---	---	---
Asian			16	4546	2	13	14	88	13	81	11	69	8.5	77	9.3	78	10.7	76	8.2	74	4.8	80
Black or African American			90	3948	18	20	72	80	35	39	18	20	5.8	53	6.5	54	8.3	59	6.5	59	3.7	62
Native Hawaiian or Other Pacific Islander			0	---	---	---	---	---	---	---	---	---	---	---	---	---	---	---	---	---	---	---
White			68	4285	3	4	65	96	51	75	32	47	7.2	65	8.8	73	10.2	73	7.8	71	4.6	76
Two or More Races			4	---	---	---	---	---	---	---	---	---	---	---	---	---	---	---	---	---	---	---
No Information Provided			1	---	---	---	---	---	---	---	---	---	---	---	---	---	---	---	---	---	---	---
Economically Disadvantaged			Yes 2229	4187	189	8	2040	92	1404	63	832	37	6.9	63	8.0	67	9.5	68	7.3	66	4.2	71
			No 571	4253	41	7	530	93	385	67	249	44	7.2	65	8.2	69	9.9	70	7.7	70	4.3	72
			No Information Provided 6	4015	1	17	5	83	4	67	2	33	6.0	55	7.0	58	8.5	61	7.0	64	4.7	78
Title I, Part A			Participants 2771	4201	227	8	2544	92	1771	64	1076	39	6.9	63	8.0	67	9.6	68	7.4	67	4.3	71
			Nonparticipants 29	4140	3	10	26	90	18	62	5	17	6.5	59	8.1	68	8.9	64	7.4	67	4.0	67
			No Information Provided 6	4015	1	17	5	83	4	67	2	33	6.0	55	7.0	58	8.5	61	7.0	64	4.7	78
Migrant			Yes 8	4001	0	0	8	100	4	50	1	13	6.6	60	7.1	59	8.8	63	7.1	65	3.1	52
			No 2792	4201	230	8	2562	92	1785	64	1080	39	6.9	63	8.0	67	9.6	68	7.4	67	4.3	71
			No Information Provided 6	4015	1	17	5	83	4	67	2	33	6.0	55	7.0	58	8.5	61	7.0	64	4.7	78
Limited English Proficient			Current LEP 888	4105	94	11	794	89	513	58	276	31	6.6	60	7.7	64	9.1	65	6.9	63	4.0	67
			Non-LEP (Monitored 1st Year) 117	4413	2	2	115	98	93	79	61	52	7.9	72	9.1	76	10.4	74	8.0	73	4.9	81
			Non-LEP (Monitored 2nd Year) 83	4487	1	1	82	99	70	84	54	65	8.1	74	9.4	79	11.3	81	8.3	75	5.0	83
			Other Non-LEP 1712	4222	133	8	1579	92	1113	65	690	40	7.0	64	8.1	68	9.6	69	7.5	68	4.3	72
			No Information Provided 6	4015	1	17	5	83	4	67	2	33	6.0	55	7.0	58	8.5	61	7.0	64	4.7	78
Bilingual			Participants 35	4093	5	14	30	86	17	49	10	29	5.8	53	7.6	63	8.3	59	6.7	61	4.4	73
			Nonparticipants 2764	4202	224	8	2540	92	1772	64	1071	39	7.0	63	8.1	67	9.6	68	7.4	67	4.3	71
			No Information Provided 7	3902	2	29	5	71	4	57	2	29	5.4	49	6.3	52	8.0	57	6.3	57	4.3	71
ESL			Participants 823	4124	82	10	741	90	487	59	268	33	6.7	61	7.7	64	9.3	66	7.0	64	4.1	68
			Nonparticipants 1977	4232	148	7	1829	93	1302	66	813	41	7.0	64	8.2	68	9.7	69	7.5	68	4.3	72
			No Information Provided 6	4015	1	17	5	83	4	67	2	33	6.0	55	7.0	58	8.5	61	7.0	64	4.7	78
Special Education			Yes 164	3751	43	26	121	74	42	26	13	8	5.0	46	5.8	48	7.1	51	5.3	49	3.2	53
			No 2636	4228	187	7	2449	93	1747	66	1068	41	7.1	64	8.2	68	9.7	69	7.5	68	4.3	72
			No Information Provided 6	4015	1	17	5	83	4	67	2	33	6.0	55	7.0	58	8.5	61	7.0	64	4.7	78
Gifted/Talented			Participants 1	---	---	---	---	---	---	---	---	---	---	---	---	---	---	---	---	---	---	---
			Nonparticipants 2799	4201	229	8	2570	92	1789	64	1081	39	6.9	63	8.0	67	9.6	68	7.4	67	4.3	71
			No Information Provided 6	4015	1	17	5	83	4	67	2	33	6.0	55	7.0	58	8.5	61	7.0	64	4.7	78
At-Risk			Yes 1228	4124	128	10	1100	90	727	59	407	33	6.6	60	7.7	64	9.3	66	7.0	64	4.1	68
			No 1572	4260	102	6	1470	94	1062	68	674	43	7.2	65	8.3	69	9.8	70	7.7	70	4.4	73
			No Information Provided 6	4015	1	17	5	83	4	67	2	33	6.0	55	7.0	58	8.5	61	7.0	64	4.7	78
Career/Technical Education			Participants 9	4775	0	0	9	100	9	100	8	89	9.3	85	10.3	86	12.2	87	9.8	89	5.2	87
			Nonparticipants 2791	4199	230	8	2561	92	1780	64	1073	38	6.9	63	8.0	67	9.6	68	7.4	67	4.3	71
			No Information Provided 6	4015	1	17	5	83	4	67	2	33	6.0	55	7.0	58	8.5	61	7.0	64	4.7	78



# STATE OF TEXAS ASSESSMENTS OF ACADEMIC READINESS

## Summary Report

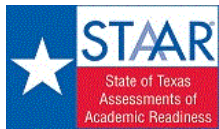
### ALGEBRA I

#### First-Time Tested Students

District: 108-807 IDEA PUBLIC SCH

Report Date: SPRING 2018  
Date of Testing: SPRING 2018

Administration Summary			Number of Students Tested	Average Scale Score	Did Not Meet		Approaches		Meets		Masters		Results for Each Reporting Category										
													1		2		3		4		5		
Number	Percent											Number and Algebraic Methods		Describing and Graphing Linear Functions, Equations, and Inequalities		Writing and Solving Linear Functions, Equations, and Inequalities		Quadratic Functions and Equations		Exponential Functions and Equations			
Legend			Number of Items Tested																				
--- = No Data Reported For Fewer Than Five Students			11		12		14		11		6		Avg. # of Items / % Correct										
			#	%	#	%	#	%	#	%	#	%	#	%	#	%	#	%	#	%	#	%	
<b>All Students</b>			2740	4212	210	8	2530	92	1778	65	1078	39	7.0	64	8.1	67	9.6	69	7.4	68	4.3	71	
<b>Male</b>			1317	4192	121	9	1196	91	823	62	508	39	6.8	62	8.1	68	9.5	68	7.3	67	4.2	71	
<b>Female</b>			1422	4231	89	6	1333	94	954	67	570	40	7.2	65	8.1	67	9.8	70	7.5	68	4.3	72	
<b>No Information Provided</b>			1	---	---	---	---	---	---	---	---	---	---	---	---	---	---	---	---	---	---	---	
<b>Hispanic/Latino</b>			2566	4217	187	7	2379	93	1679	65	1017	40	7.0	64	8.1	68	9.7	69	7.4	68	4.3	72	
<b>American Indian or Alaska Native</b>			0	---	---	---	---	---	---	---	---	---	---	---	---	---	---	---	---	---	---	---	
<b>Asian</b>			16	4546	2	13	14	88	13	81	11	69	8.5	77	9.3	78	10.7	76	8.2	74	4.8	80	
<b>Black or African American</b>			87	3951	17	20	70	80	34	39	17	20	5.9	54	6.5	54	8.3	59	6.5	59	3.7	62	
<b>Native Hawaiian or Other Pacific Islander</b>			0	---	---	---	---	---	---	---	---	---	---	---	---	---	---	---	---	---	---	---	
<b>White</b>			66	4296	3	5	63	95	50	76	32	48	7.2	65	8.8	73	10.3	74	7.8	71	4.6	77	
<b>Two or More Races</b>			4	---	---	---	---	---	---	---	---	---	---	---	---	---	---	---	---	---	---	---	
<b>No Information Provided</b>			1	---	---	---	---	---	---	---	---	---	---	---	---	---	---	---	---	---	---	---	
<b>Economically Disadvantaged</b>			Yes	2177	4199	173	8	2004	92	1393	64	829	38	6.9	63	8.0	67	9.6	68	7.4	67	4.3	71
			No	557	4266	36	6	521	94	381	68	247	44	7.2	66	8.3	69	9.9	71	7.7	70	4.4	73
			No Information Provided	6	4015	1	17	5	83	4	67	2	33	6.0	55	7.0	58	8.5	61	7.0	64	4.7	78
<b>Title I, Part A</b>			Participants	2706	4213	207	8	2499	92	1756	65	1071	40	7.0	64	8.1	67	9.6	69	7.4	68	4.3	71
			Nonparticipants	28	4162	2	7	26	93	18	64	5	18	6.6	60	8.3	69	9.1	65	7.4	68	4.1	69
			No Information Provided	6	4015	1	17	5	83	4	67	2	33	6.0	55	7.0	58	8.5	61	7.0	64	4.7	78
<b>Migrant</b>			Yes	8	4001	0	0	8	100	4	50	1	13	6.6	60	7.1	59	8.8	63	7.1	65	3.1	52
			No	2726	4213	209	8	2517	92	1770	65	1075	39	7.0	64	8.1	68	9.6	69	7.4	68	4.3	72
			No Information Provided	6	4015	1	17	5	83	4	67	2	33	6.0	55	7.0	58	8.5	61	7.0	64	4.7	78
<b>Limited English Proficient</b>			Current LEP	875	4111	91	10	784	90	510	58	276	32	6.6	60	7.7	64	9.2	66	6.9	63	4.0	67
			Non-LEP (Monitored 1st Year)	117	4413	2	2	115	98	93	79	61	52	7.9	72	9.1	76	10.4	74	8.0	73	4.9	81
			Non-LEP (Monitored 2nd Year)	83	4487	1	1	82	99	70	84	54	65	8.1	74	9.4	79	11.3	81	8.3	75	5.0	83
			Other Non-LEP	1659	4239	115	7	1544	93	1101	66	685	41	7.1	64	8.2	68	9.7	70	7.6	69	4.3	72
			No Information Provided	6	4015	1	17	5	83	4	67	2	33	6.0	55	7.0	58	8.5	61	7.0	64	4.7	78
<b>Bilingual</b>			Participants	35	4093	5	14	30	86	17	49	10	29	5.8	53	7.6	63	8.3	59	6.7	61	4.4	73
			Nonparticipants	2698	4214	203	8	2495	92	1757	65	1066	40	7.0	64	8.1	68	9.7	69	7.4	68	4.3	71
			No Information Provided	7	3902	2	29	5	71	4	57	2	29	5.4	49	6.3	52	8.0	57	6.3	57	4.3	71
<b>ESL</b>			Participants	811	4131	79	10	732	90	485	60	268	33	6.7	61	7.8	65	9.3	66	7.0	64	4.1	68
			Nonparticipants	1923	4247	130	7	1793	93	1289	67	808	42	7.1	65	8.2	69	9.8	70	7.6	69	4.4	73
			No Information Provided	6	4015	1	17	5	83	4	67	2	33	6.0	55	7.0	58	8.5	61	7.0	64	4.7	78
<b>Special Education</b>			Yes	140	3752	38	27	102	73	37	26	11	8	5.0	46	5.8	48	7.2	51	5.3	48	3.2	53
			No	2594	4237	171	7	2423	93	1737	67	1065	41	7.1	65	8.2	69	9.8	70	7.5	69	4.3	72
			No Information Provided	6	4015	1	17	5	83	4	67	2	33	6.0	55	7.0	58	8.5	61	7.0	64	4.7	78
<b>Gifted/Talented</b>			Participants	1	---	---	---	---	---	---	---	---	---	---	---	---	---	---	---	---	---	---	---
			Nonparticipants	2733	4213	208	8	2525	92	1774	65	1076	39	7.0	64	8.1	67	9.6	69	7.4	68	4.3	71
			No Information Provided	6	4015	1	17	5	83	4	67	2	33	6.0	55	7.0	58	8.5	61	7.0	64	4.7	78
<b>At-Risk</b>			Yes	1190	4138	117	10	1073	90	720	61	405	34	6.7	61	7.8	65	9.4	67	7.1	64	4.1	69
			No	1544	4270	92	6	1452	94	1054	68	671	43	7.2	66	8.3	69	9.9	70	7.7	70	4.4	74
			No Information Provided	6	4015	1	17	5	83	4	67	2	33	6.0	55	7.0	58	8.5	61	7.0	64	4.7	78
<b>Career/Technical Education</b>			Participants	9	4775	0	0	9	100	9	100	8	89	9.3	85	10.3	86	12.2	87	9.8	89	5.2	87
			Nonparticipants	2725	4211	209	8	2516	92	1765	65	1068	39	7.0	64	8.1	67	9.6	69	7.4	67	4.3	71
			No Information Provided	6	4015	1	17	5	83	4	67	2	33	6.0	55	7.0	58	8.5	61	7.0	64	4.7	78



# STATE OF TEXAS ASSESSMENTS OF ACADEMIC READINESS

## Summary Report

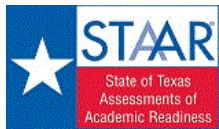
### ALGEBRA I

#### Retested Students

District: 108-807 IDEA PUBLIC SCH

Report Date: SPRING 2018  
Date of Testing: SPRING 2018

Administration Summary			Number of Students Tested	Average Scale Score	Did Not Meet		Approaches		Meets		Masters		Results for Each Reporting Category									
													1		2		3		4		5	
Number	Percent											Number and Algebraic Methods		Describing and Graphing Linear Functions, Equations, and Inequalities		Writing and Solving Linear Functions, Equations, and Inequalities		Quadratic Functions and Equations		Exponential Functions and Equations		
Legend			Number of Items Tested																			
--- = No Data Reported For Fewer Than Five Students			11		12		14		11		6		Avg. # of Items / % Correct									
			#	%	#	%	#	%	#	%	#	%	#	%	#	%	#	%	#	%	#	%
<b>All Students</b>			66	3700	21	32	45	68	15	23	5	8	4.3	40	5.8	48	6.6	47	5.1	46	3.2	54
Male			44	3718	12	27	32	73	8	18	5	11	4.3	39	6.0	50	6.8	48	5.2	47	3.3	55
Female			22	3663	9	41	13	59	7	32	0	0	4.5	41	5.4	45	6.4	45	5.0	45	3.0	50
No Information Provided			0	---	---	---	---	---	---	---	---	---	---	---	---	---	---	---	---	---	---	---
Hispanic/Latino			61	3686	20	33	41	67	13	21	4	7	4.3	39	5.7	48	6.5	47	5.0	46	3.2	53
American Indian or Alaska Native			0	---	---	---	---	---	---	---	---	---	---	---	---	---	---	---	---	---	---	---
Asian			0	---	---	---	---	---	---	---	---	---	---	---	---	---	---	---	---	---	---	---
Black or African American			3	---	---	---	---	---	---	---	---	---	---	---	---	---	---	---	---	---	---	---
Native Hawaiian or Other Pacific Islander			0	---	---	---	---	---	---	---	---	---	---	---	---	---	---	---	---	---	---	---
White			2	---	---	---	---	---	---	---	---	---	---	---	---	---	---	---	---	---	---	---
Two or More Races			0	---	---	---	---	---	---	---	---	---	---	---	---	---	---	---	---	---	---	---
No Information Provided			0	---	---	---	---	---	---	---	---	---	---	---	---	---	---	---	---	---	---	---
Economically Disadvantaged	Yes		52	3687	16	31	36	69	11	21	3	6	4.4	40	5.7	48	6.5	47	5.0	45	3.2	53
	No		14	3747	5	36	9	64	4	29	2	14	4.3	39	6.0	50	7.0	50	5.6	51	3.3	55
	No Information Provided		0	---	---	---	---	---	---	---	---	---	---	---	---	---	---	---	---	---	---	---
Title I, Part A	Participants		65	3702	20	31	45	69	15	23	5	8	4.4	40	5.8	48	6.6	47	5.1	46	3.2	54
	Nonparticipants		1	---	---	---	---	---	---	---	---	---	---	---	---	---	---	---	---	---	---	---
	No Information Provided		0	---	---	---	---	---	---	---	---	---	---	---	---	---	---	---	---	---	---	---
Migrant	Yes		0	---	---	---	---	---	---	---	---	---	---	---	---	---	---	---	---	---	---	---
	No		66	3700	21	32	45	68	15	23	5	8	4.3	40	5.8	48	6.6	47	5.1	46	3.2	54
	No Information Provided		0	---	---	---	---	---	---	---	---	---	---	---	---	---	---	---	---	---	---	---
Limited English Proficient	Current LEP		13	3700	3	23	10	77	3	23	0	0	4.1	37	5.8	49	6.8	48	5.0	45	3.4	56
	Non-LEP (Monitored 1st Year)		0	---	---	---	---	---	---	---	---	---	---	---	---	---	---	---	---	---	---	---
	Non-LEP (Monitored 2nd Year)		0	---	---	---	---	---	---	---	---	---	---	---	---	---	---	---	---	---	---	---
	Other Non-LEP		53	3700	18	34	35	66	12	23	5	9	4.4	40	5.8	48	6.6	47	5.1	47	3.2	53
	No Information Provided		0	---	---	---	---	---	---	---	---	---	---	---	---	---	---	---	---	---	---	---
Bilingual	Participants		0	---	---	---	---	---	---	---	---	---	---	---	---	---	---	---	---	---	---	---
	Nonparticipants		66	3700	21	32	45	68	15	23	5	8	4.3	40	5.8	48	6.6	47	5.1	46	3.2	54
	No Information Provided		0	---	---	---	---	---	---	---	---	---	---	---	---	---	---	---	---	---	---	---
ESL	Participants		12	3673	3	25	9	75	2	17	0	0	3.8	34	5.8	48	6.6	47	5.0	45	3.3	54
	Nonparticipants		54	3706	18	33	36	67	13	24	5	9	4.5	41	5.8	48	6.6	47	5.1	47	3.2	53
	No Information Provided		0	---	---	---	---	---	---	---	---	---	---	---	---	---	---	---	---	---	---	---
Special Education	Yes		24	3750	5	21	19	79	5	21	2	8	4.9	45	6.2	51	6.7	48	5.5	50	3.2	53
	No		42	3671	16	38	26	62	10	24	3	7	4.0	37	5.5	46	6.6	47	4.9	45	3.2	54
	No Information Provided		0	---	---	---	---	---	---	---	---	---	---	---	---	---	---	---	---	---	---	---
Gifted/Talented	Participants		0	---	---	---	---	---	---	---	---	---	---	---	---	---	---	---	---	---	---	---
	Nonparticipants		66	3700	21	32	45	68	15	23	5	8	4.3	40	5.8	48	6.6	47	5.1	46	3.2	54
	No Information Provided		0	---	---	---	---	---	---	---	---	---	---	---	---	---	---	---	---	---	---	---
At-Risk	Yes		38	3674	11	29	27	71	7	18	2	5	4.3	39	5.6	46	6.5	46	4.9	44	3.2	53
	No		28	3735	10	36	18	64	8	29	3	11	4.4	40	6.0	50	6.8	48	5.4	49	3.3	55
	No Information Provided		0	---	---	---	---	---	---	---	---	---	---	---	---	---	---	---	---	---	---	---
Career/Technical Education	Participants		0	---	---	---	---	---	---	---	---	---	---	---	---	---	---	---	---	---	---	---
	Nonparticipants		66	3700	21	32	45	68	15	23	5	8	4.3	40	5.8	48	6.6	47	5.1	46	3.2	54
	No Information Provided		0	---	---	---	---	---	---	---	---	---	---	---	---	---	---	---	---	---	---	---



# STATE OF TEXAS ASSESSMENTS OF ACADEMIC READINESS

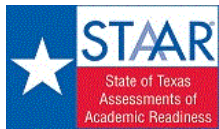
## Summary Report

### BIOLOGY All Students

District: 108-807 IDEA PUBLIC SCH

Report Date: SPRING 2018  
Date of Testing: SPRING 2018

Administration Summary			Number of Students Tested	Average Scale Score	Results for Each Reporting Category																		
					Number		Did Not Meet		Approaches		Meets		Masters		1		2		3		4		5
Percent	#	%			#	%	#	%	#	%	#	%	#	%	#	%	#	%	#	%	#	%	
Students Tested	2412	100																					
Students Not Tested																							
Absent	1	0																					
Other	1	0																					
Total Documents Submitted	2414	100																					
Legend					--- = No Data Reported For Fewer Than Five Students																		
					Cell Structure and Function		Mechanisms of Genetics		Biological Evolution and Classification		Biological Processes and Systems		Interdependence within Environmental Systems		Number of Items Tested		Avg. # of Items / % Correct						
			11		11		10		11		11												
<b>All Students</b>	2412	4418	79	3	2333	97	1946	81	916	38	8.2	74	8.2	75	7.3	73	8.5	78	8.0	73			
Male	1200	4449	40	3	1160	97	984	82	479	40	8.2	74	8.2	75	7.4	74	8.7	79	8.1	74			
Female	1206	4388	39	3	1167	97	958	79	435	36	8.2	74	8.2	74	7.2	72	8.4	76	7.9	72			
No Information Provided	6	4217	0	0	6	100	4	67	2	33	8.5	77	7.7	70	6.8	68	7.5	68	6.8	62			
Hispanic/Latino	2300	4414	72	3	2228	97	1858	81	862	37	8.2	74	8.2	74	7.3	73	8.5	78	8.0	73			
American Indian or Alaska Native	1	---	---	---	---	---	---	---	---	---	---	---	---	---	---	---	---	---	---	---			
Asian	10	4976	0	0	10	100	10	100	9	90	10.0	91	10.3	94	8.3	83	9.9	90	10.1	92			
Black or African American	38	4428	2	5	36	95	32	84	16	42	8.5	78	8.4	76	7.3	73	8.4	76	8.1	73			
Native Hawaiian or Other Pacific Islander	2	---	---	---	---	---	---	---	---	---	---	---	---	---	---	---	---	---	---	---			
White	50	4540	3	6	47	94	38	76	25	50	8.3	75	8.6	78	7.6	76	8.4	76	8.5	77			
Two or More Races	5	4150	1	20	4	80	2	40	2	40	6.8	62	7.6	69	6.4	64	6.0	55	6.4	58			
No Information Provided	6	3993	1	17	5	83	3	50	1	17	7.7	70	6.2	56	5.3	53	6.5	59	6.5	59			
Economically Disadvantaged	Yes	2033	4407	64	3	1969	97	1634	80	761	37	8.2	74	8.2	74	7.3	73	8.5	77	8.0	73		
	No	372	4484	14	4	358	96	308	83	154	41	8.3	75	8.3	76	7.4	74	8.7	79	8.2	75		
	No Information Provided	7	4065	1	14	6	86	4	57	1	7.7	70	6.4	58	5.9	59	6.9	62	7.0	64			
Title I, Part A	Participants	2388	4418	78	3	2310	97	1925	81	907	38	8.2	74	8.2	75	7.3	73	8.5	78	8.0	73		
	Nonparticipants	18	4554	0	0	18	100	18	100	8	44	8.3	76	8.9	81	7.6	76	9.5	86	9.1	83		
	No Information Provided	6	3993	1	17	5	83	3	50	1	17	7.7	70	6.2	56	5.3	53	6.5	59	6.5	59		
Migrant	Yes	5	4612	0	0	5	100	5	100	1	20	9.0	82	8.2	75	7.2	72	9.6	87	9.4	85		
	No	2400	4418	78	3	2322	97	1937	81	914	38	8.2	74	8.2	75	7.3	73	8.5	78	8.0	73		
	No Information Provided	7	4065	1	14	6	86	4	57	1	14	7.7	70	6.4	58	5.9	59	6.9	62	7.0	64		
Limited English Proficient	Current LEP	761	4188	43	6	718	94	510	67	154	20	7.4	68	7.3	66	6.7	67	7.7	70	7.1	65		
	Non-LEP (Monitored 1st Year)	113	4580	0	0	113	100	104	92	59	52	8.6	79	8.9	81	7.9	79	9.3	84	8.9	81		
	Non-LEP (Monitored 2nd Year)	92	4684	1	1	91	99	89	97	51	55	9.0	82	9.3	84	7.9	79	9.5	87	9.2	84		
	Other Non-LEP	1439	4511	34	2	1405	98	1239	86	651	45	8.5	77	8.6	78	7.6	76	8.9	81	8.4	76		
	No Information Provided	7	4065	1	14	6	86	4	57	1	14	7.7	70	6.4	58	5.9	59	6.9	62	7.0	64		
Bilingual	Participants	16	4487	2	13	14	88	14	88	6	38	8.4	77	8.3	75	7.4	74	8.6	78	7.9	72		
	Nonparticipants	2389	4418	76	3	2313	97	1928	81	909	38	8.2	74	8.2	75	7.3	73	8.5	78	8.0	73		
	No Information Provided	7	4065	1	14	6	86	4	57	1	14	7.7	70	6.4	58	5.9	59	6.9	62	7.0	64		
ESL	Participants	721	4199	36	5	685	95	493	68	152	21	7.5	68	7.4	67	6.8	68	7.7	70	7.2	65		
	Nonparticipants	1684	4513	42	2	1642	98	1449	86	763	45	8.5	77	8.6	78	7.6	76	8.9	81	8.4	76		
	No Information Provided	7	4065	1	14	6	86	4	57	1	14	7.7	70	6.4	58	5.9	59	6.9	62	7.0	64		
Special Education	Yes	111	3883	27	24	84	76	42	38	10	9	6.2	56	5.8	53	5.6	56	6.1	55	5.6	51		
	No	2294	4445	51	2	2243	98	1900	83	905	39	8.3	75	8.3	76	7.4	74	8.7	79	8.1	74		
	No Information Provided	7	4065	1	14	6	86	4	57	1	14	7.7	70	6.4	58	5.9	59	6.9	62	7.0	64		
Gifted/Talented	Participants	1	---	---	---	---	---	---	---	---	---	---	---	---	---	---	---	---	---	---	---		
	Nonparticipants	2405	4419	78	3	2327	97	1943	81	915	38	8.2	74	8.2	75	7.3	73	8.5	78	8.0	73		
	No Information Provided	6	3993	1	17	5	83	3	50	1	17	7.7	70	6.2	56	5.3	53	6.5	59	6.5	59		
At-Risk	Yes	1172	4257	57	5	1115	95	852	73	300	26	7.7	70	7.6	69	6.9	69	8.0	72	7.4	68		
	No	1233	4573	21	2	1212	98	1090	88	615	50	8.6	78	8.8	80	7.7	77	9.1	83	8.6	78		
	No Information Provided	7	4065	1	14	6	86	4	57	1	14	7.7	70	6.4	58	5.9	59	6.9	62	7.0	64		
Career/Technical Education	Participants	12	4195	1	8	11	92	9	75	2	17	7.1	64	7.8	70	7.1	71	6.9	63	7.6	69		
	Nonparticipants	2396	4420	77	3	2319	97	1934	81	913	38	8.2	74	8.2	75	7.3	73	8.5	78	8.0	73		
	No Information Provided	4	---	---	---	---	---	---	---	---	---	---	---	---	---	---	---	---	---	---	---		



# STATE OF TEXAS ASSESSMENTS OF ACADEMIC READINESS

## Summary Report

### BIOLOGY

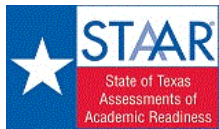
#### First-Time Tested Students

District: 108-807 IDEA PUBLIC SCH

Report Date: SPRING 2018  
Date of Testing: SPRING 2018

Administration Summary			Number of Students Tested	Average Scale Score	Did Not Meet		Approaches		Meets		Masters		Results for Each Reporting Category										
					#	%	#	%	#	%	#	%	1		2		3		4		5		
Number	Percent												Cell Structure and Function		Mechanisms of Genetics		Biological Evolution and Classification		Biological Processes and Systems		Interdependence within Environmental Systems		
Students Tested	2390	100																					
Students Not Tested																							
Absent	1	0																					
Other	0	0																					
Total Documents Submitted	2391	100																					
Legend			--- = No Data Reported For Fewer Than Five Students																				
			Number of Items Tested		Avg. # of Items / % Correct		11		11		10		11		11								
			#	%	#	%	#	%	#	%	#	%	#	%	#	%							
<b>All Students</b>			2390	4426	67	3	2323	97	1943	81	916	38	8.2	75	8.2	75	7.3	73	8.6	78	8.1	73	
Male			1189	4457	34	3	1155	97	982	83	479	40	8.2	75	8.2	75	7.5	75	8.7	80	8.1	74	
Female			1195	4396	33	3	1162	97	957	80	435	36	8.2	74	8.2	75	7.2	72	8.4	76	8.0	73	
No Information Provided			6	4217	0	0	6	100	4	67	2	33	8.5	77	7.7	70	6.8	68	7.5	68	6.8	62	
Hispanic/Latino			2279	4422	60	3	2219	97	1855	81	862	38	8.2	74	8.2	75	7.3	73	8.6	78	8.0	73	
American Indian or Alaska Native			1	---	---	---	---	---	---	---	---	---	---	---	---	---	---	---	---	---	---	---	
Asian			10	4976	0	0	10	100	10	100	9	90	10.0	91	10.3	94	8.3	83	9.9	90	10.1	92	
Black or African American			38	4428	2	5	36	95	32	84	16	42	8.5	78	8.4	76	7.3	73	8.4	76	8.1	73	
Native Hawaiian or Other Pacific Islander			2	---	---	---	---	---	---	---	---	---	---	---	---	---	---	---	---	---	---	---	
White			49	4556	3	6	46	94	38	78	25	51	8.3	76	8.7	79	7.6	76	8.4	77	8.5	78	
Two or More Races			5	4150	1	20	4	80	2	40	2	40	6.8	62	7.6	69	6.4	64	6.0	55	6.4	58	
No Information Provided			6	3993	1	17	5	83	3	50	1	17	7.7	70	6.2	56	5.3	53	6.5	59	6.5	59	
Economically Disadvantaged	Yes		2016	4414	56	3	1960	97	1631	81	761	38	8.2	74	8.2	75	7.3	73	8.5	78	8.0	73	
	No		367	4499	10	3	357	97	308	84	154	42	8.3	76	8.4	76	7.5	75	8.8	80	8.3	75	
	No Information Provided		7	4065	1	14	6	86	4	57	1	14	7.7	70	6.4	58	5.9	59	6.9	62	7.0	64	
Title I, Part A	Participants		2366	4426	66	3	2300	97	1922	81	907	38	8.2	75	8.2	75	7.3	73	8.6	78	8.0	73	
	Nonparticipants		18	4554	0	0	18	100	18	100	8	44	8.3	76	8.9	81	7.6	76	9.5	86	9.1	83	
	No Information Provided		6	3993	1	17	5	83	3	50	1	17	7.7	70	6.2	56	5.3	53	6.5	59	6.5	59	
Migrant	Yes		5	4612	0	0	5	100	5	100	1	20	9.0	82	8.2	75	7.2	72	9.6	87	9.4	85	
	No		2378	4426	66	3	2312	97	1934	81	914	38	8.2	75	8.2	75	7.3	73	8.6	78	8.1	73	
	No Information Provided		7	4065	1	14	6	86	4	57	1	14	7.7	70	6.4	58	5.9	59	6.9	62	7.0	64	
Limited English Proficient	Current LEP		751	4196	37	5	714	95	509	68	154	21	7.5	68	7.3	67	6.7	67	7.7	70	7.1	65	
	Non-LEP (Monitored 1st Year)		113	4580	0	0	113	100	104	92	59	52	8.6	79	8.9	81	7.9	79	9.3	84	8.9	81	
	Non-LEP (Monitored 2nd Year)		92	4684	1	1	91	99	89	97	51	55	9.0	82	9.3	84	7.9	79	9.5	87	9.2	84	
	Other Non-LEP		1427	4519	28	2	1399	98	1237	87	651	46	8.5	77	8.6	78	7.6	76	8.9	81	8.4	76	
	No Information Provided		7	4065	1	14	6	86	4	57	1	14	7.7	70	6.4	58	5.9	59	6.9	62	7.0	64	
Bilingual	Participants		16	4487	2	13	14	88	14	88	6	38	8.4	77	8.3	75	7.4	74	8.6	78	7.9	72	
	Nonparticipants		2367	4426	64	3	2303	97	1925	81	909	38	8.2	75	8.2	75	7.3	73	8.6	78	8.1	73	
	No Information Provided		7	4065	1	14	6	86	4	57	1	14	7.7	70	6.4	58	5.9	59	6.9	62	7.0	64	
ESL	Participants		712	4207	31	4	681	96	492	69	152	21	7.5	68	7.4	67	6.8	68	7.8	71	7.2	65	
	Nonparticipants		1671	4521	35	2	1636	98	1447	87	763	46	8.5	77	8.6	78	7.6	76	8.9	81	8.4	77	
	No Information Provided		7	4065	1	14	6	86	4	57	1	14	7.7	70	6.4	58	5.9	59	6.9	62	7.0	64	
Special Education	Yes		105	3905	23	22	82	78	41	39	10	10	6.3	57	5.9	54	5.7	57	6.2	56	5.7	52	
	No		2278	4451	43	2	2235	98	1898	83	905	40	8.3	75	8.3	76	7.4	74	8.7	79	8.2	74	
	No Information Provided		7	4065	1	14	6	86	4	57	1	14	7.7	70	6.4	58	5.9	59	6.9	62	7.0	64	
Gifted/Talented	Participants		1	---	---	---	---	---	---	---	---	---	---	---	---	---	---	---	---	---	---	---	
	Nonparticipants		2383	4427	66	3	2317	97	1940	81	915	38	8.2	75	8.2	75	7.3	73	8.6	78	8.1	73	
	No Information Provided		6	3993	1	17	5	83	3	50	1	17	7.7	70	6.2	56	5.3	53	6.5	59	6.5	59	
At-Risk	Yes		1156	4267	48	4	1108	96	850	74	300	26	7.8	71	7.6	69	6.9	69	8.0	73	7.5	68	
	No		1227	4577	18	1	1209	99	1089	89	615	50	8.6	78	8.8	80	7.7	77	9.1	83	8.6	78	
	No Information Provided		7	4065	1	14	6	86	4	57	1	14	7.7	70	6.4	58	5.9	59	6.9	62	7.0	64	
Career/Technical Education	Participants		11	4237	1	9	10	91	9	82	2	18	7.1	64	7.9	72	7.2	72	7.4	67	7.8	71	
	Nonparticipants		2375	4427	65	3	2310	97	1931	81	913	38	8.2	75	8.2	75	7.3	73	8.6	78	8.1	73	
	No Information Provided		4	---	---	---	---	---	---	---	---	---	---	---	---	---	---	---	---	---	---	---	





# STATE OF TEXAS ASSESSMENTS OF ACADEMIC READINESS

## Summary Report

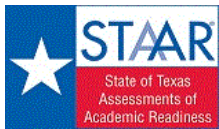
### BIOLOGY

#### Retested Students

District: 108-807 IDEA PUBLIC SCH

Report Date: SPRING 2018  
Date of Testing: SPRING 2018

Administration Summary			Number of Students Tested	Average Scale Score	Did Not Meet		Approaches		Meets		Masters		Results for Each Reporting Category									
					#	%	#	%	#	%	#	%	1		2		3		4		5	
Number	Percent												Cell Structure and Function		Mechanisms of Genetics		Biological Evolution and Classification		Biological Processes and Systems		Interdependence within Environmental Systems	
Students Tested	22	96																				
Students Not Tested																						
Absent	0	0																				
Other	1	4																				
Total Documents Submitted	23	100																				
Legend																						
--- = No Data Reported For Fewer Than Five Students																						
<b>All Students</b>			22	3560	12	55	10	45	3	14	0	0	4.9	45	4.3	39	4.0	40	4.2	38	4.1	37
Male			11	3579	6	55	5	45	2	18	0	0	5.1	46	4.5	40	3.9	39	4.4	40	4.2	38
Female			11	3540	6	55	5	45	1	9	0	0	4.7	43	4.1	37	4.2	42	4.1	37	4.0	36
No Information Provided			0	---	---	---	---	---	---	---	---	---	---	---	---	---	---	---	---	---	---	---
Hispanic/Latino			21	3549	12	57	9	43	3	14	0	0	4.9	44	4.3	39	3.9	39	4.2	38	4.0	37
American Indian or Alaska Native			0	---	---	---	---	---	---	---	---	---	---	---	---	---	---	---	---	---	---	---
Asian			0	---	---	---	---	---	---	---	---	---	---	---	---	---	---	---	---	---	---	---
Black or African American			0	---	---	---	---	---	---	---	---	---	---	---	---	---	---	---	---	---	---	---
Native Hawaiian or Other Pacific Islander			0	---	---	---	---	---	---	---	---	---	---	---	---	---	---	---	---	---	---	---
White			1	---	---	---	---	---	---	---	---	---	---	---	---	---	---	---	---	---	---	---
Two or More Races			0	---	---	---	---	---	---	---	---	---	---	---	---	---	---	---	---	---	---	---
No Information Provided			0	---	---	---	---	---	---	---	---	---	---	---	---	---	---	---	---	---	---	---
Economically Disadvantaged	Yes		17	3616	8	47	9	53	3	18	0	0	5.4	49	4.5	41	4.0	40	4.5	41	4.6	42
	No		5	3368	4	80	1	20	0	0	0	0	3.2	29	3.6	33	4.2	42	3.4	31	2.4	22
	No Information Provided		0	---	---	---	---	---	---	---	---	---	---	---	---	---	---	---	---	---	---	---
Title I, Part A	Participants		22	3560	12	55	10	45	3	14	0	0	4.9	45	4.3	39	4.0	40	4.2	38	4.1	37
	Nonparticipants		0	---	---	---	---	---	---	---	---	---	---	---	---	---	---	---	---	---	---	---
	No Information Provided		0	---	---	---	---	---	---	---	---	---	---	---	---	---	---	---	---	---	---	---
Migrant	Yes		0	---	---	---	---	---	---	---	---	---	---	---	---	---	---	---	---	---	---	---
	No		22	3560	12	55	10	45	3	14	0	0	4.9	45	4.3	39	4.0	40	4.2	38	4.1	37
	No Information Provided		0	---	---	---	---	---	---	---	---	---	---	---	---	---	---	---	---	---	---	---
Limited English Proficient	Current LEP		10	3563	6	60	4	40	1	10	0	0	5.4	49	3.9	35	3.7	37	4.2	38	4.3	39
	Non-LEP (Monitored 1st Year)		0	---	---	---	---	---	---	---	---	---	---	---	---	---	---	---	---	---	---	---
	Non-LEP (Monitored 2nd Year)		0	---	---	---	---	---	---	---	---	---	---	---	---	---	---	---	---	---	---	---
	Other Non-LEP		12	3557	6	50	6	50	2	17	0	0	4.5	41	4.6	42	4.3	43	4.3	39	3.9	36
	No Information Provided		0	---	---	---	---	---	---	---	---	---	---	---	---	---	---	---	---	---	---	---
Bilingual	Participants		0	---	---	---	---	---	---	---	---	---	---	---	---	---	---	---	---	---	---	---
	Nonparticipants		22	3560	12	55	10	45	3	14	0	0	4.9	45	4.3	39	4.0	40	4.2	38	4.1	37
	No Information Provided		0	---	---	---	---	---	---	---	---	---	---	---	---	---	---	---	---	---	---	---
ESL	Participants		9	3602	5	56	4	44	1	11	0	0	5.7	52	4.2	38	4.0	40	4.0	36	4.6	41
	Nonparticipants		13	3530	7	54	6	46	2	15	0	0	4.4	40	4.3	39	4.1	41	4.4	40	3.8	34
	No Information Provided		0	---	---	---	---	---	---	---	---	---	---	---	---	---	---	---	---	---	---	---
Special Education	Yes		6	3494	4	67	2	33	1	17	0	0	4.5	41	3.3	30	4.0	40	4.5	41	3.7	33
	No		16	3584	8	50	8	50	2	13	0	0	5.1	46	4.6	42	4.1	41	4.1	38	4.3	39
	No Information Provided		0	---	---	---	---	---	---	---	---	---	---	---	---	---	---	---	---	---	---	---
Gifted/Talented	Participants		0	---	---	---	---	---	---	---	---	---	---	---	---	---	---	---	---	---	---	---
	Nonparticipants		22	3560	12	55	10	45	3	14	0	0	4.9	45	4.3	39	4.0	40	4.2	38	4.1	37
	No Information Provided		0	---	---	---	---	---	---	---	---	---	---	---	---	---	---	---	---	---	---	---
At-Risk	Yes		16	3540	9	56	7	44	2	13	0	0	5.1	46	4.0	36	3.9	39	4.0	36	4.1	37
	No		6	3613	3	50	3	50	1	17	0	0	4.5	41	5.0	45	4.3	43	4.8	44	4.2	38
	No Information Provided		0	---	---	---	---	---	---	---	---	---	---	---	---	---	---	---	---	---	---	---
Career/Technical Education	Participants		1	---	---	---	---	---	---	---	---	---	---	---	---	---	---	---	---	---	---	---
	Nonparticipants		21	3551	12	57	9	43	3	14	0	0	4.8	44	4.2	38	4.0	40	4.3	39	4.0	37
	No Information Provided		0	---	---	---	---	---	---	---	---	---	---	---	---	---	---	---	---	---	---	---



# STATE OF TEXAS ASSESSMENTS OF ACADEMIC READINESS

## Summary Report

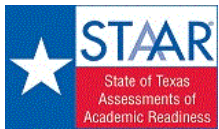
### ENGLISH I

#### All Students

District: 108-807 IDEA PUBLIC SCH

Report Date: SPRING 2018  
Date of Testing: SPRING 2018

Administration Summary			Number of Students Tested	Average Scale Score	Did Not Meet		Approaches		Meets		Masters		Results for Each Reporting Category												
													1	2	3	4	5	6							
Number	Percent											Understanding/ Analysis Across Genres	Understanding/ Analysis of Literary Texts	Understanding/ Analysis of Informational Texts	Composition	Revision	Editing								
Legend			Number of Points Possible																						
--- = No Data Reported For Fewer Than Five Students			8		13		13		16		9		9												
			Number of Points Scored																						
			#	%	#	%	#	%	#	%	#	%	#	%	#	%	#	%							
<b>All Students</b>			2076	4137	455	22	1621	78	1294	62	239	12	6.4	80	9.7	74	9.1	70	9.4	59	6.5	73	7.0	78	
<b>Male</b>			1046	4079	266	25	780	75	600	57	99	9	6.2	78	9.4	72	9.0	70	8.9	56	6.5	72	6.7	74	
<b>Female</b>			1028	4197	187	18	841	82	694	68	140	14	6.5	81	10.0	77	9.2	71	9.9	62	6.6	73	7.3	81	
<b>No Information Provided</b>			2	---	---	---	---	---	---	---	---	---	---	---	---	---	---	---	---	---	---	---	---	---	
<b>Hispanic/Latino</b>			1963	4132	432	22	1531	78	1223	62	220	11	6.4	79	9.7	74	9.2	70	9.4	59	6.5	73	7.0	78	
<b>American Indian or Alaska Native</b>			1	---	---	---	---	---	---	---	---	---	---	---	---	---	---	---	---	---	---	---	---	---	
<b>Asian</b>			11	4485	1	9	10	91	9	82	5	45	6.8	85	10.4	80	9.5	73	12.0	75	7.3	81	7.9	88	
<b>Black or African American</b>			43	4084	12	28	31	72	20	47	2	5	6.3	79	9.5	73	8.5	65	9.2	57	6.4	72	6.6	73	
<b>Native Hawaiian or Other Pacific Islander</b>			4	---	---	---	---	---	---	---	---	---	---	---	---	---	---	---	---	---	---	---	---	---	
<b>White</b>			50	4256	8	16	42	84	35	70	10	20	6.7	84	10.4	80	9.1	70	10.0	63	6.5	72	7.5	84	
<b>Two or More Races</b>			3	---	---	---	---	---	---	---	---	---	---	---	---	---	---	---	---	---	---	---	---	---	
<b>No Information Provided</b>			1	---	---	---	---	---	---	---	---	---	---	---	---	---	---	---	---	---	---	---	---	---	
<b>Economically Disadvantaged</b>	Yes		1727	4127	379	22	1348	78	1070	62	191	11	6.4	79	9.7	74	9.1	70	9.4	59	6.5	72	7.0	78	
	No		347	4187	74	21	273	79	224	65	48	14	6.5	81	9.8	76	9.3	71	9.6	60	6.7	74	7.1	79	
	No Information Provided		2	---	---	---	---	---	---	---	---	---	---	---	---	---	---	---	---	---	---	---	---	---	---
<b>Title I, Part A</b>	Participants		2062	4137	452	22	1610	78	1284	62	239	12	6.4	80	9.7	74	9.1	70	9.4	59	6.5	73	7.0	78	
	Nonparticipants		13	4198	2	15	11	85	10	77	0	0	6.7	84	10.2	78	9.8	76	9.5	60	6.2	69	7.8	86	
	No Information Provided		1	---	---	---	---	---	---	---	---	---	---	---	---	---	---	---	---	---	---	---	---	---	---
<b>Migrant</b>	Yes		5	4046	2	40	3	60	3	60	0	0	7.0	88	9.6	74	7.8	60	8.8	55	6.2	69	7.0	78	
	No		2069	4138	451	22	1618	78	1291	62	239	12	6.4	80	9.7	74	9.1	70	9.4	59	6.5	73	7.0	78	
	No Information Provided		2	---	---	---	---	---	---	---	---	---	---	---	---	---	---	---	---	---	---	---	---	---	---
<b>Limited English Proficient</b>	Current LEP		583	3903	215	37	368	63	238	41	14	2	5.7	72	8.7	67	8.1	62	8.5	53	5.8	64	6.3	70	
	Non-LEP (Monitored 1st Year)		103	4292	9	9	94	91	83	81	14	14	6.9	86	10.5	81	10.1	77	9.6	60	7.2	80	7.7	86	
	Non-LEP (Monitored 2nd Year)		92	4343	8	9	84	91	80	87	15	16	7.0	88	10.8	83	10.0	77	10.4	65	7.2	79	7.7	86	
	Other Non-LEP		1295	4216	221	17	1074	83	893	69	196	15	6.6	82	10.0	77	9.5	73	9.7	61	6.8	75	7.2	80	
	No Information Provided		3	---	---	---	---	---	---	---	---	---	---	---	---	---	---	---	---	---	---	---	---	---	---
<b>Bilingual</b>	Participants		10	3849	5	50	5	50	4	40	0	0	5.5	69	8.0	62	8.4	65	8.2	51	5.2	58	6.1	68	
	Nonparticipants		2064	4139	448	22	1616	78	1290	63	239	12	6.4	80	9.7	75	9.1	70	9.4	59	6.5	73	7.0	78	
	No Information Provided		2	---	---	---	---	---	---	---	---	---	---	---	---	---	---	---	---	---	---	---	---	---	---
<b>ESL</b>	Participants		543	3915	192	35	351	65	228	42	13	2	5.8	72	8.7	67	8.1	63	8.6	54	5.8	65	6.3	70	
	Nonparticipants		1531	4216	261	17	1270	83	1066	70	226	15	6.6	82	10.0	77	9.5	73	9.7	61	6.8	75	7.3	81	
	No Information Provided		2	---	---	---	---	---	---	---	---	---	---	---	---	---	---	---	---	---	---	---	---	---	---
<b>Special Education</b>	Yes		127	3628	88	69	39	31	16	13	0	0	4.9	61	7.4	57	6.7	52	6.5	41	4.6	51	5.2	58	
	No		1947	4171	365	19	1582	81	1278	66	239	12	6.5	81	9.8	76	9.3	72	9.6	60	6.7	74	7.1	79	
	No Information Provided		2	---	---	---	---	---	---	---	---	---	---	---	---	---	---	---	---	---	---	---	---	---	---
<b>Gifted/Talented</b>	Participants		0	---	---	---	---	---	---	---	---	---	---	---	---	---	---	---	---	---	---	---	---	---	---
	Nonparticipants		2075	4137	454	22	1621	78	1294	62	239	12	6.4	80	9.7	74	9.1	70	9.4	59	6.5	73	7.0	78	
	No Information Provided		1	---	---	---	---	---	---	---	---	---	---	---	---	---	---	---	---	---	---	---	---	---	---
<b>At-Risk</b>	Yes		987	3980	302	31	685	69	491	50	43	4	6.0	75	9.0	69	8.5	65	8.8	55	6.0	67	6.5	73	
	No		1087	4280	151	14	936	86	803	74	196	18	6.7	84	10.3	79	9.7	75	10.0	62	7.0	78	7.4	83	
	No Information Provided		2	---	---	---	---	---	---	---	---	---	---	---	---	---	---	---	---	---	---	---	---	---	---
<b>Career/Technical Education</b>	Participants		13	3962	4	31	9	69	6	46	0	0	5.5	69	9.3	72	8.5	66	8.3	52	5.5	62	7.1	79	
	Nonparticipants		2062	4138	450	22	1612	78	1288	62	239	12	6.4	80	9.7	74	9.1	70	9.4	59	6.5	73	7.0	78	
	No Information Provided		1	---	---	---	---	---	---	---	---	---	---	---	---	---	---	---	---	---	---	---	---	---	---



# STATE OF TEXAS ASSESSMENTS OF ACADEMIC READINESS Constructed Responses Summary Report

District: 108-807 IDEA PUBLIC SCH

## ENGLISH I All Students

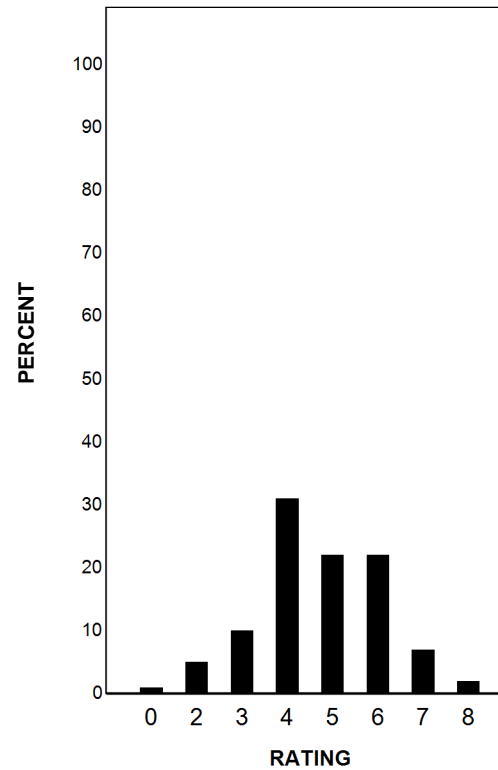
Report Date: SPRING 2018  
Date of Testing: SPRING 2018

--- = No Data Reported For Fewer Than Five Students

### Written Composition Rating Summary

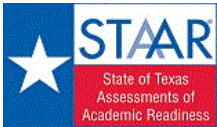
#### Expository Composition

Rating	#	%
0	22	1
2	108	5
3	198	10
4	653	31
5	466	22
6	448	22
7	135	7
8	46	2
Total	2076	100



Each composition has been scored independently by two readers. The written composition rating of 0-8 represents the summation of these scores.





# STATE OF TEXAS ASSESSMENTS OF ACADEMIC READINESS

## Summary Report

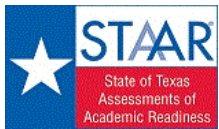
### ENGLISH I

#### First-Time Tested Students

District: 108-807 IDEA PUBLIC SCH

Report Date: SPRING 2018  
Date of Testing: SPRING 2018

Administration Summary			Number of Students Tested	Average Scale Score	Results for Each Reporting Category																					
					Number	Percent	Did Not Meet		Approaches		Meets		Masters		1		2		3		4		5		6	
Students Tested	Students Not Tested	#					%	#	%	#	%	#	%	Understanding/ Analysis Across Genres	Understanding/ Analysis of Literary Texts	Understanding/ Analysis of Informational Texts	Composition	Revision	Editing	Number of Points Possible						
Absent	Other							8		13		13		16		9		9								
Total Documents Submitted	Legend				Number of Points Scored																					
--- = No Data Reported For Fewer Than Five Students																										
					#	%	#	%	#	%	#	%	#	%	#	%	#	%	#	%	#	%	#	%		
<b>All Students</b>					1917	4184	333	17	1584	83	1280	67	239	12	6.5	82	9.9	76	9.4	72	9.6	60	6.7	74	7.2	80
Male					956	4129	196	21	760	79	590	62	99	10	6.4	81	9.7	75	9.3	72	9.1	57	6.6	74	6.9	76
Female					959	4240	135	14	824	86	690	72	140	15	6.6	83	10.2	78	9.4	73	10.1	63	6.8	75	7.5	83
No Information Provided			2	---	---	---	---	---	---	---	---	---	---	---	---	---	---	---	---	---	---	---	---	---		
Hispanic/Latino			1811	4179	315	17	1496	83	1209	67	220	12	6.5	81	9.9	76	9.4	72	9.6	60	6.7	74	7.2	79		
American Indian or Alaska Native			1	---	---	---	---	---	---	---	---	---	---	---	---	---	---	---	---	---	---	---	---	---		
Asian			10	4598	0	0	10	100	9	90	5	50	7.4	93	10.9	84	9.8	75	12.4	78	7.6	84	8.3	92		
Black or African American			41	4098	11	27	30	73	20	49	2	5	6.3	79	9.6	74	8.6	66	9.2	58	6.4	71	6.7	74		
Native Hawaiian or Other Pacific Islander			4	---	---	---	---	---	---	---	---	---	---	---	---	---	---	---	---	---	---	---	---	---		
White			46	4327	5	11	41	89	35	76	10	22	6.9	86	10.8	83	9.5	73	10.3	64	6.8	75	7.7	86		
Two or More Races			3	---	---	---	---	---	---	---	---	---	---	---	---	---	---	---	---	---	---	---	---	---		
No Information Provided			1	---	---	---	---	---	---	---	---	---	---	---	---	---	---	---	---	---	---	---	---	---		
Economically Disadvantaged			Yes 1605	4169	287	18	1318	82	1057	66	191	12	6.5	81	9.9	76	9.3	72	9.5	60	6.7	74	7.1	79		
			No 310	4263	44	14	266	86	223	72	48	15	6.7	84	10.2	79	9.6	74	9.9	62	6.9	76	7.3	82		
			No Information Provided 2	---	---	---	---	---	---	---	---	---	---	---	---	---	---	---	---	---	---	---	---	---		
Title I, Part A			Participants 1904	4183	331	17	1573	83	1270	67	239	13	6.5	82	9.9	76	9.4	72	9.6	60	6.7	74	7.2	80		
			Nonparticipants 12	4257	1	8	11	92	10	83	0	0	7.1	89	10.3	79	10.1	78	9.7	60	6.7	74	7.9	88		
			No Information Provided 1	---	---	---	---	---	---	---	---	---	---	---	---	---	---	---	---	---	---	---	---	---		
Migrant			Yes 4	---	---	---	---	---	---	---	---	---	---	---	---	---	---	---	---	---	---	---	---	---		
			No 1911	4184	330	17	1581	83	1277	67	239	13	6.5	82	9.9	77	9.4	72	9.6	60	6.7	74	7.2	80		
			No Information Provided 2	---	---	---	---	---	---	---	---	---	---	---	---	---	---	---	---	---	---	---	---	---		
Limited English Proficient			Current LEP 522	3943	165	32	357	68	235	45	14	3	5.9	74	8.9	68	8.3	64	8.7	54	5.9	66	6.4	71		
			Non-LEP (Monitored 1st Year) 99	4320	6	6	93	94	83	84	14	14	7.0	88	10.6	82	10.2	79	9.7	61	7.3	81	7.8	86		
			Non-LEP (Monitored 2nd Year) 89	4371	5	6	84	94	80	90	15	17	7.1	88	10.9	84	10.1	78	10.5	66	7.3	81	7.9	87		
			Other Non-LEP 1204	4264	155	13	1049	87	882	73	196	16	6.7	84	10.3	79	9.7	75	9.9	62	6.9	77	7.4	82		
			No Information Provided 3	---	---	---	---	---	---	---	---	---	---	---	---	---	---	---	---	---	---	---	---	---		
Bilingual			Participants 8	3831	4	50	4	50	3	38	0	0	5.3	66	8.0	62	8.1	63	8.0	50	5.1	57	6.4	71		
			Nonparticipants 1907	4186	327	17	1580	83	1277	67	239	13	6.5	82	10.0	77	9.4	72	9.6	60	6.7	74	7.2	80		
			No Information Provided 2	---	---	---	---	---	---	---	---	---	---	---	---	---	---	---	---	---	---	---	---	---		
ESL			Participants 487	3958	146	30	341	70	226	46	13	3	6.0	75	9.0	69	8.4	65	8.7	55	6.0	67	6.5	72		
			Nonparticipants 1428	4262	185	13	1243	87	1054	74	226	16	6.7	84	10.3	79	9.7	75	9.9	62	6.9	77	7.4	82		
			No Information Provided 2	---	---	---	---	---	---	---	---	---	---	---	---	---	---	---	---	---	---	---	---	---		
Special Education			Yes 94	3655	60	64	34	36	13	14	0	0	5.0	63	7.7	59	6.8	53	6.8	43	4.6	51	5.1	57		
			No 1821	4212	271	15	1550	85	1267	70	239	13	6.6	83	10.1	77	9.5	73	9.8	61	6.8	76	7.3	81		
			No Information Provided 2	---	---	---	---	---	---	---	---	---	---	---	---	---	---	---	---	---	---	---	---	---		
Gifted/Talented			Participants 0	---	---	---	---	---	---	---	---	---	---	---	---	---	---	---	---	---	---	---	---	---		
			Nonparticipants 1916	4184	332	17	1584	83	1280	67	239	12	6.5	82	9.9	77	9.4	72	9.6	60	6.7	74	7.2	80		
			No Information Provided 1	---	---	---	---	---	---	---	---	---	---	---	---	---	---	---	---	---	---	---	---	---		
At-Risk			Yes 875	4035	215	25	660	75	481	55	43	5	6.2	77	9.4	72	8.8	68	9.0	56	6.2	69	6.7	74		
			No 1040	4310	116	11	924	89	799	77	196	19	6.8	85	10.4	80	9.8	76	10.1	63	7.1	79	7.6	84		
			No Information Provided 2	---	---	---	---	---	---	---	---	---	---	---	---	---	---	---	---	---	---	---	---	---		
Career/Technical Education			Participants 11	4021	3	27	8	73	6	55	0	0	5.8	73	9.6	74	8.6	66	8.7	55	5.8	65	7.1	79		
			Nonparticipants 1905	4185	329	17	1576	83	1274	67	239	13	6.5	82	9.9	77	9.4	72	9.6	60	6.7	74	7.2	80		
			No Information Provided 1	---	---	---	---	---	---	---	---	---	---	---	---	---	---	---	---	---	---	---	---	---		



# STATE OF TEXAS ASSESSMENTS OF ACADEMIC READINESS Constructed Responses Summary Report

District: 108-807 IDEA PUBLIC SCH

## ENGLISH I First-Time Tested Students

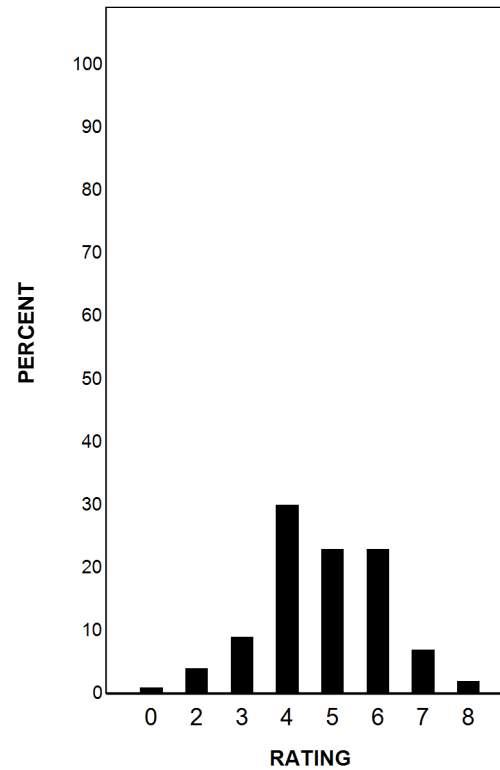
Report Date: SPRING 2018  
Date of Testing: SPRING 2018

--- = No Data Reported For Fewer Than Five Students

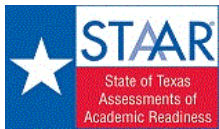
### Written Composition Rating Summary

#### Expository Composition

Rating	#	%
0	11	1
2	81	4
3	173	9
4	584	30
5	447	23
6	440	23
7	135	7
8	46	2
Total	1917	100



Each composition has been scored independently by two readers. The written composition rating of 0-8 represents the summation of these scores.



# STATE OF TEXAS ASSESSMENTS OF ACADEMIC READINESS

## Summary Report

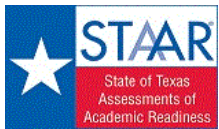
### ENGLISH I

#### Retested Students

District: 108-807 IDEA PUBLIC SCH

Report Date: SPRING 2018  
Date of Testing: SPRING 2018

Administration Summary			Number of Students Tested	Average Scale Score	Results for Each Reporting Category																				
					Number	Percent	1		2		3		4		5		6								
Students Tested	159	99			Understanding/Analysis Across Genres		Understanding/Analysis of Literary Texts		Understanding/Analysis of Informational Texts		Composition		Revision		Editing										
	Students Not Tested																								
Absent	0	0																							
Other	2	1																							
Total Documents Submitted	161	100																							
Legend																									
--- = No Data Reported For Fewer Than Five Students																									
					Did Not Meet	Approaches	Meets	Masters	Number of Points Possible																
			#	%	#	%	#	%	#	%	8		13		13		16		9		9				
			Number of Points Scored																						
			#	%	#	%	#	%	#	%	#	%	#	%	#	%	#	%	#	%	#	%			
<b>All Students</b>			159	3572	122	77	37	23	14	9	0	0	4.4	55	6.5	50	6.4	50	6.9	43	4.6	51	5.1	57	
Male			90	3548	70	78	20	22	10	11	0	0	4.2	52	6.1	47	6.3	49	7.1	44	4.6	51	4.9	54	
Female			69	3604	52	75	17	25	4	6	0	0	4.8	60	7.0	54	6.6	51	6.7	42	4.7	52	5.4	61	
No Information Provided			0	---	---	---	---	---	---	---	---	---	---	---	---	---	---	---	---	---	---	---	---	---	
Hispanic/Latino			152	3574	117	77	35	23	14	9	0	0	4.4	56	6.5	50	6.5	50	6.9	43	4.6	51	5.1	57	
American Indian or Alaska Native			0	---	---	---	---	---	---	---	---	---	---	---	---	---	---	---	---	---	---	---	---	---	
Asian			1	---	---	---	---	---	---	---	---	---	---	---	---	---	---	---	---	---	---	---	---	---	
Black or African American			2	---	---	---	---	---	---	---	---	---	---	---	---	---	---	---	---	---	---	---	---	---	
Native Hawaiian or Other Pacific Islander			0	---	---	---	---	---	---	---	---	---	---	---	---	---	---	---	---	---	---	---	---	---	
White			4	---	---	---	---	---	---	---	---	---	---	---	---	---	---	---	---	---	---	---	---	---	
Two or More Races			0	---	---	---	---	---	---	---	---	---	---	---	---	---	---	---	---	---	---	---	---	---	
No Information Provided			0	---	---	---	---	---	---	---	---	---	---	---	---	---	---	---	---	---	---	---	---	---	
Economically Disadvantaged			Yes	122	3577	92	75	30	25	13	11	0	0	4.5	56	6.6	50	6.4	50	7.0	44	4.5	50	5.1	57
			No	37	3556	30	81	7	19	1	3	0	0	4.4	54	6.2	48	6.4	49	6.5	41	4.9	55	5.1	57
			No Information Provided	0	---	---	---	---	---	---	---	---	---	---	---	---	---	---	---	---	---	---	---	---	---
Title I, Part A			Participants	158	3573	121	77	37	23	14	9	0	0	4.4	56	6.5	50	6.4	50	6.9	43	4.7	52	5.1	57
			Nonparticipants	1	---	---	---	---	---	---	---	---	---	---	---	---	---	---	---	---	---	---	---	---	---
			No Information Provided	0	---	---	---	---	---	---	---	---	---	---	---	---	---	---	---	---	---	---	---	---	---
Migrant			Yes	1	---	---	---	---	---	---	---	---	---	---	---	---	---	---	---	---	---	---	---	---	---
			No	158	3572	121	77	37	23	14	9	0	0	4.4	55	6.5	50	6.5	50	6.9	43	4.6	51	5.1	57
			No Information Provided	0	---	---	---	---	---	---	---	---	---	---	---	---	---	---	---	---	---	---	---	---	---
Limited English Proficient			Current LEP	61	3559	50	82	11	18	3	5	0	0	4.4	55	6.6	50	6.0	46	7.2	45	4.5	50	5.0	55
			Non-LEP (Monitored 1st Year)	4	---	---	---	---	---	---	---	---	---	---	---	---	---	---	---	---	---	---	---	---	---
			Non-LEP (Monitored 2nd Year)	3	---	---	---	---	---	---	---	---	---	---	---	---	---	---	---	---	---	---	---	---	---
			Other Non-LEP	91	3582	66	73	25	27	11	12	0	0	4.5	56	6.4	49	6.7	52	6.6	41	4.7	53	5.2	58
			No Information Provided	0	---	---	---	---	---	---	---	---	---	---	---	---	---	---	---	---	---	---	---	---	---
Bilingual			Participants	2	---	---	---	---	---	---	---	---	---	---	---	---	---	---	---	---	---	---	---	---	---
			Nonparticipants	157	3568	121	77	36	23	13	8	0	0	4.4	55	6.5	50	6.4	49	6.9	43	4.6	51	5.1	57
			No Information Provided	0	---	---	---	---	---	---	---	---	---	---	---	---	---	---	---	---	---	---	---	---	---
ESL			Participants	56	3548	46	82	10	18	2	4	0	0	4.2	53	6.5	50	5.8	45	7.2	45	4.5	50	5.1	57
			Nonparticipants	103	3585	76	74	27	26	12	12	0	0	4.6	57	6.5	50	6.8	52	6.7	42	4.7	52	5.1	57
			No Information Provided	0	---	---	---	---	---	---	---	---	---	---	---	---	---	---	---	---	---	---	---	---	---
Special Education			Yes	33	3550	28	85	5	15	3	9	0	0	4.6	58	6.6	51	6.5	50	5.8	36	4.3	48	5.3	59
			No	126	3578	94	75	32	25	11	9	0	0	4.4	55	6.4	50	6.4	50	7.2	45	4.7	52	5.1	57
			No Information Provided	0	---	---	---	---	---	---	---	---	---	---	---	---	---	---	---	---	---	---	---	---	---
Gifted/Talented			Participants	0	---	---	---	---	---	---	---	---	---	---	---	---	---	---	---	---	---	---	---	---	---
			Nonparticipants	159	3572	122	77	37	23	14	9	0	0	4.4	55	6.5	50	6.4	50	6.9	43	4.6	51	5.1	57
			No Information Provided	0	---	---	---	---	---	---	---	---	---	---	---	---	---	---	---	---	---	---	---	---	---
At-Risk			Yes	112	3552	87	78	25	22	10	9	0	0	4.3	54	6.3	49	6.2	48	6.9	43	4.5	50	5.1	57
			No	47	3620	35	74	12	26	4	9	0	0	4.7	59	6.8	52	7.0	54	6.9	43	4.9	55	5.1	57
			No Information Provided	0	---	---	---	---	---	---	---	---	---	---	---	---	---	---	---	---	---	---	---	---	---
Career/Technical Education			Participants	2	---	---	---	---	---	---	---	---	---	---	---	---	---	---	---	---	---	---	---	---	---
			Nonparticipants	157	3571	121	77	36	23	14	9	0	0	4.4	55	6.5	50	6.4	49	6.9	43	4.6	52	5.1	57
			No Information Provided	0	---	---	---	---	---	---	---	---	---	---	---	---	---	---	---	---	---	---	---	---	---



# STATE OF TEXAS ASSESSMENTS OF ACADEMIC READINESS Constructed Responses Summary Report

District: 108-807 IDEA PUBLIC SCH

## ENGLISH I Retested Students

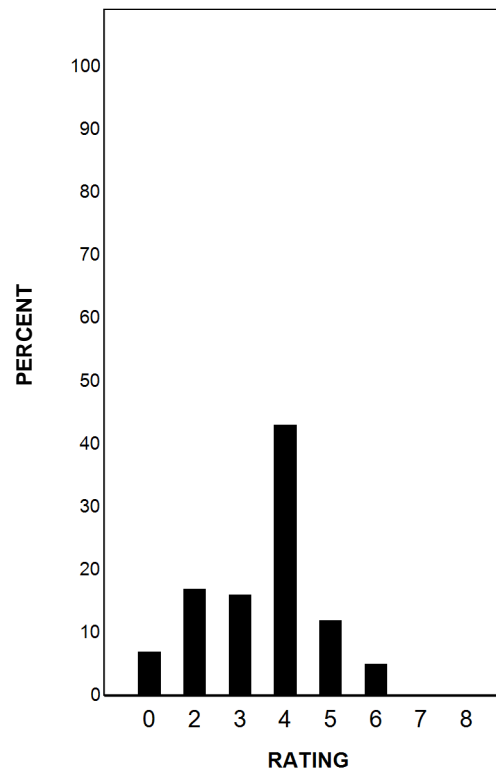
Report Date: SPRING 2018  
Date of Testing: SPRING 2018

--- = No Data Reported For Fewer Than Five Students

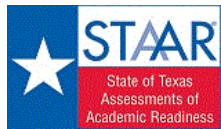
### Written Composition Rating Summary

#### Expository Composition

Rating	#	%
0	11	7
2	27	17
3	25	16
4	69	43
5	19	12
6	8	5
7	0	0
8	0	0
Total	159	100



Each composition has been scored independently by two readers. The written composition rating of 0-8 represents the summation of these scores.



# STATE OF TEXAS ASSESSMENTS OF ACADEMIC READINESS

## Summary Report

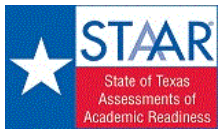
### ENGLISH II

#### All Students

District: 108-807 IDEA PUBLIC SCH

Report Date: SPRING 2018  
Date of Testing: SPRING 2018

Administration Summary			Number of Students Tested	Average Scale Score	Did Not Meet				Approaches				Meets				Masters				Results for Each Reporting Category																							
					Number		Percent		#		%		#		%		#		%		#		%		#		%		#		%		#		%									
					#	%	#	%	#	%	#	%	#	%	#	%	#	%	#	%	Number of Points Possible						Number of Points Scored																	
																					1		2		3		4		5		6		8		13		13		16		9		9	
																					Understanding/Analysis Across Genres		Understanding/Analysis of Literary Texts		Understanding/Analysis of Informational Texts		Composition		Revision		Editing													
Legend																					--- = No Data Reported For Fewer Than Five Students																							
<b>All Students</b>			1464	4230	218	15	1246	85	1043	71	177	12	6.3	78	9.4	73	10.1	77	10.9	68	7.1	78	6.9	77																				
Male			717	4160	121	17	596	83	485	68	58	8	6.2	78	9.1	70	9.9	76	10.5	66	7.0	77	6.7	74																				
Female			746	4297	97	13	649	87	558	75	119	16	6.3	79	9.8	75	10.2	79	11.3	71	7.1	79	7.1	79																				
No Information Provided			1	---	---	---	---	---	---	---	---	---	---	---	---	---	---	---	---	---	---	---	---	---																				
Hispanic/Latino			1402	4227	211	15	1191	85	996	71	168	12	6.2	78	9.4	73	10.1	77	10.9	68	7.0	78	6.9	77																				
American Indian or Alaska Native			1	---	---	---	---	---	---	---	---	---	---	---	---	---	---	---	---	---	---	---	---	---																				
Asian			8	4346	2	25	6	75	5	63	3	38	6.3	78	9.3	71	8.9	68	11.5	72	7.6	85	7.6	85																				
Black or African American			16	4172	0	0	16	100	11	69	0	0	6.7	84	8.9	69	10.4	80	11.3	70	7.3	81	6.1	67																				
Native Hawaiian or Other Pacific Islander			0	---	---	---	---	---	---	---	---	---	---	---	---	---	---	---	---	---	---	---	---	---																				
White			36	4351	5	14	31	86	29	81	6	17	6.4	80	9.8	75	10.4	80	11.4	72	7.6	85	7.0	78																				
Two or More Races			1	---	---	---	---	---	---	---	---	---	---	---	---	---	---	---	---	---	---	---	---	---																				
No Information Provided			0	---	---	---	---	---	---	---	---	---	---	---	---	---	---	---	---	---	---	---	---	---																				
Economically Disadvantaged			Yes	1185	4222	174	15	1011	85	839	71	134	11	6.2	78	9.4	73	10.0	77	10.9	68	7.0	78	6.9	76																			
			No	278	4264	44	16	234	84	203	73	43	15	6.3	79	9.5	73	10.2	78	10.9	68	7.1	79	7.0	78																			
			No Information Provided	1	---	---	---	---	---	---	---	---	---	---	---	---	---	---	---	---	---	---	---	---	---																			
Title I, Part A			Participants	1456	4230	217	15	1239	85	1037	71	177	12	6.3	78	9.4	73	10.1	77	10.9	68	7.1	78	6.9	77																			
			Nonparticipants	7	4254	1	14	6	86	5	71	0	0	6.1	77	10.3	79	10.0	77	11.7	73	6.7	75	6.9	76																			
			No Information Provided	1	---	---	---	---	---	---	---	---	---	---	---	---	---	---	---	---	---	---	---	---	---																			
Migrant			Yes	1	---	---	---	---	---	---	---	---	---	---	---	---	---	---	---	---	---	---	---	---																				
			No	1462	4230	217	15	1245	85	1042	71	177	12	6.3	78	9.4	73	10.1	77	10.9	68	7.1	78	6.9	77																			
			No Information Provided	1	---	---	---	---	---	---	---	---	---	---	---	---	---	---	---	---	---	---	---	---	---																			
Limited English Proficient			Current LEP	345	3983	97	28	248	72	169	49	9	3	5.8	73	8.4	64	9.1	70	9.9	62	6.3	70	6.3	69																			
			Non-LEP (Monitored 1st Year)	62	4323	5	8	57	92	49	79	10	16	6.5	81	10.0	77	10.4	80	11.3	71	7.4	82	7.1	79																			
			Non-LEP (Monitored 2nd Year)	90	4372	6	7	84	93	79	88	10	11	6.7	83	10.1	77	10.6	81	11.6	72	7.5	83	7.2	80																			
			Other Non-LEP	966	4299	110	11	856	89	745	77	148	15	6.4	80	9.7	75	10.3	79	11.2	70	7.3	81	7.1	79																			
			No Information Provided	1	---	---	---	---	---	---	---	---	---	---	---	---	---	---	---	---	---	---	---	---	---																			
Bilingual			Participants	1	---	---	---	---	---	---	---	---	---	---	---	---	---	---	---	---	---	---	---	---																				
			Nonparticipants	1462	4230	217	15	1245	85	1042	71	177	12	6.3	78	9.4	73	10.1	77	10.9	68	7.1	78	6.9	77																			
			No Information Provided	1	---	---	---	---	---	---	---	---	---	---	---	---	---	---	---	---	---	---	---	---	---																			
ESL			Participants	338	3989	92	27	246	73	167	49	8	2	5.8	72	8.4	65	9.2	71	10.0	62	6.3	70	6.3	70																			
			Nonparticipants	1125	4302	126	11	999	89	875	78	169	15	6.4	80	9.7	75	10.3	79	11.2	70	7.3	81	7.1	79																			
			No Information Provided	1	---	---	---	---	---	---	---	---	---	---	---	---	---	---	---	---	---	---	---	---	---																			
Special Education			Yes	73	3634	46	63	27	37	11	15	0	0	4.8	60	6.9	53	7.3	56	8.0	50	5.1	56	5.3	59																			
			No	1390	4261	172	12	1218	88	1031	74	177	13	6.3	79	9.6	74	10.2	79	11.1	69	7.2	80	7.0	78																			
			No Information Provided	1	---	---	---	---	---	---	---	---	---	---	---	---	---	---	---	---	---	---	---	---	---																			
Gifted/Talented			Participants	0	---	---	---	---	---	---	---	---	---	---	---	---	---	---	---	---	---	---	---	---	---																			
			Nonparticipants	1463	4230	218	15	1245	85	1042	71	177	12	6.3	78	9.4	73	10.1	77	10.9	68	7.1	78	6.9	77																			
			No Information Provided	1	---	---	---	---	---	---	---	---	---	---	---	---	---	---	---	---	---	---	---	---	---																			
At-Risk			Yes	687	4047	159	23	528	77	383	56	35	5	5.9	74	8.6	66	9.3	72	10.3	64	6.6	73	6.4	71																			
			No	776	4392	59	8	717	92	659	85	142	18	6.6	82	10.2	78	10.7	82	11.5	72	7.5	83	7.4	82																			
			No Information Provided	1	---	---	---	---	---	---	---	---	---	---	---	---	---	---	---	---	---	---	---	---	---																			
Career/Technical Education			Participants	4	---	---	---	---	---	---	---	---	---	---	---	---	---	---	---	---	---	---	---	---	---																			
			Nonparticipants	1459	4230	218	15	1241	85	1039	71	177	12	6.3	78	9.4	73	10.1	77	10.9	68	7.1	78	6.9	77																			
			No Information Provided	1	---	---	---	---	---	---	---	---	---	---	---	---	---	---	---	---	---	---	---	---	---																			



# STATE OF TEXAS ASSESSMENTS OF ACADEMIC READINESS Constructed Responses Summary Report

District: 108-807 IDEA PUBLIC SCH

## ENGLISH II All Students

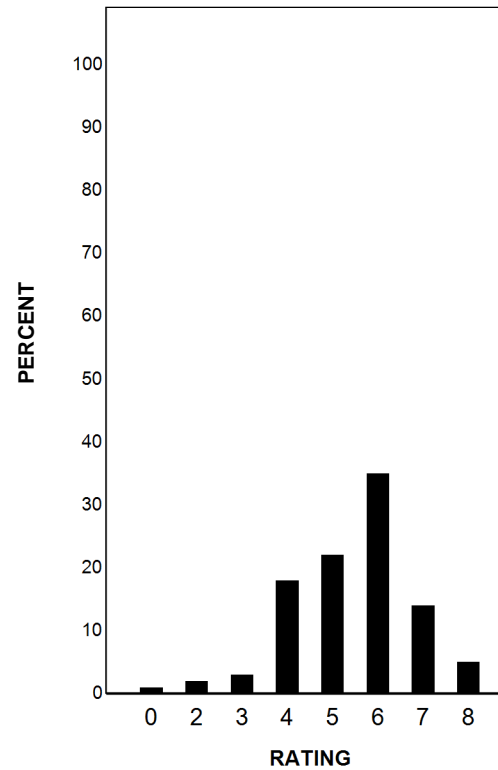
Report Date: SPRING 2018  
Date of Testing: SPRING 2018

--- = No Data Reported For Fewer Than Five Students

### Written Composition Rating Summary

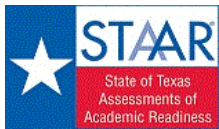
#### Persuasive Composition

Rating	#	%
0	12	1
2	26	2
3	43	3
4	262	18
5	321	22
6	515	35
7	206	14
8	79	5
Total	1464	100



Each composition has been scored independently by two readers. The written composition rating of 0-8 represents the summation of these scores.





# STATE OF TEXAS ASSESSMENTS OF ACADEMIC READINESS

## Summary Report

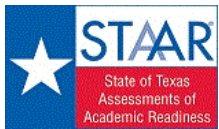
### ENGLISH II

#### First-Time Tested Students

District: 108-807 IDEA PUBLIC SCH

Report Date: SPRING 2018  
Date of Testing: SPRING 2018

Administration Summary			Number of Students Tested	Average Scale Score	Did Not Meet		Approaches		Meets		Masters		Results for Each Reporting Category															
													1	2	3	4	5	6										
Number	Percent											Understanding/ Analysis Across Genres		Understanding/ Analysis of Literary Texts		Understanding/ Analysis of Informational Texts		Composition		Revision		Editing						
Students Tested			1394	100																								
Students Not Tested																												
Absent			1	0																								
Other			0	0																								
Total Documents Submitted			1395	100																								
Legend			--- = No Data Reported For Fewer Than Five Students																									
													8		13		13		16		9		9					
<b>All Students</b>			1394	4263	166	12	1228	88	1037	74	177	13	6.3	79	9.6	74	10.2	79	11.1	69	7.2	80	7.0	78				
Male			672	4202	88	13	584	87	484	72	58	9	6.3	79	9.3	72	10.1	78	10.7	67	7.1	79	6.8	75				
Female			721	4320	78	11	643	89	553	77	119	17	6.4	79	9.9	76	10.3	80	11.4	71	7.2	80	7.2	80				
No Information Provided			1	---	---	---	---	---	---	---	---	---	---	---	---	---	---	---	---	---	---	---	---	---				
Hispanic/Latino			1332	4261	159	12	1173	88	990	74	168	13	6.3	79	9.6	74	10.2	79	11.1	69	7.1	79	7.0	78				
American Indian or Alaska Native			1	---	---	---	---	---	---	---	---	---	---	---	---	---	---	---	---	---	---	---	---	---				
Asian			8	4346	2	25	6	75	5	63	3	38	6.3	78	9.3	71	8.9	68	11.5	72	7.6	85	7.6	85				
Black or African American			16	4172	0	0	16	100	11	69	0	0	6.7	84	8.9	69	10.4	80	11.3	70	7.3	81	6.1	67				
Native Hawaiian or Other Pacific Islander			0	---	---	---	---	---	---	---	---	---	---	---	---	---	---	---	---	---	---	---	---	---				
White			36	4351	5	14	31	86	29	81	6	17	6.4	80	9.8	75	10.4	80	11.4	72	7.6	85	7.0	78				
Two or More Races			1	---	---	---	---	---	---	---	---	---	---	---	---	---	---	---	---	---	---	---	---	---				
No Information Provided			0	---	---	---	---	---	---	---	---	---	---	---	---	---	---	---	---	---	---	---	---	---				
Economically Disadvantaged			1119	4260	125	11	994	89	834	75	134	12	6.3	79	9.6	74	10.2	79	11.1	69	7.2	80	7.0	78				
Yes			1119	4260	125	11	994	89	834	75	134	12	6.3	79	9.6	74	10.2	79	11.1	69	7.2	80	7.0	78				
No			274	4273	41	15	233	85	202	74	43	16	6.4	80	9.5	73	10.2	78	10.9	68	7.2	80	7.1	78				
No Information Provided			1	---	---	---	---	---	---	---	---	---	---	---	---	---	---	---	---	---	---	---	---	---				
Title I, Part A			1386	4263	165	12	1221	88	1031	74	177	13	6.3	79	9.6	74	10.2	79	11.1	69	7.2	80	7.0	78				
Participants			1386	4263	165	12	1221	88	1031	74	177	13	6.3	79	9.6	74	10.2	79	11.1	69	7.2	80	7.0	78				
Nonparticipants			7	4254	1	14	6	86	5	71	0	0	6.1	77	10.3	79	10.0	77	11.7	73	6.7	75	6.9	76				
No Information Provided			1	---	---	---	---	---	---	---	---	---	---	---	---	---	---	---	---	---	---	---	---	---				
Migrant			1	---	---	---	---	---	---	---	---	---	---	---	---	---	---	---	---	---	---	---	---	---				
Yes			1	---	---	---	---	---	---	---	---	---	---	---	---	---	---	---	---	---	---	---	---	---				
No			1392	4263	165	12	1227	88	1036	74	177	13	6.3	79	9.6	74	10.2	79	11.1	69	7.2	80	7.0	78				
No Information Provided			1	---	---	---	---	---	---	---	---	---	---	---	---	---	---	---	---	---	---	---	---	---				
Limited English Proficient			315	4020	73	23	242	77	168	53	9	3	5.9	74	8.6	66	9.3	72	10.0	63	6.4	71	6.4	71				
Current LEP			315	4020	73	23	242	77	168	53	9	3	5.9	74	8.6	66	9.3	72	10.0	63	6.4	71	6.4	71				
Non-LEP (Monitored 1st Year)			60	4358	3	5	57	95	49	82	10	17	6.6	82	10.1	78	10.7	82	11.4	71	7.5	84	7.2	80				
Non-LEP (Monitored 2nd Year)			88	4395	4	5	84	95	79	90	10	11	6.8	85	10.2	78	10.7	82	11.7	73	7.6	84	7.3	81				
Other Non-LEP			930	4326	86	9	844	91	740	80	148	16	6.4	81	9.9	76	10.5	80	11.3	71	7.4	82	7.2	80				
No Information Provided			1	---	---	---	---	---	---	---	---	---	---	---	---	---	---	---	---	---	---	---	---	---				
Bilingual			0	---	---	---	---	---	---	---	---	---	---	---	---	---	---	---	---	---	---	---	---	---				
Participants			0	---	---	---	---	---	---	---	---	---	---	---	---	---	---	---	---	---	---	---	---	---				
Nonparticipants			1393	4263	166	12	1227	88	1036	74	177	13	6.3	79	9.6	74	10.2	79	11.1	69	7.2	80	7.0	78				
No Information Provided			1	---	---	---	---	---	---	---	---	---	---	---	---	---	---	---	---	---	---	---	---	---				
ESL			308	4029	68	22	240	78	166	54	8	3	5.9	73	8.7	67	9.4	72	10.1	63	6.5	72	6.4	72				
Participants			308	4029	68	22	240	78	166	54	8	3	5.9	73	8.7	67	9.4	72	10.1	63	6.5	72	6.4	72				
Nonparticipants			1085	4329	98	9	987	91	870	80	169	16	6.5	81	9.9	76	10.5	81	11.3	71	7.4	82	7.2	80				
No Information Provided			1	---	---	---	---	---	---	---	---	---	---	---	---	---	---	---	---	---	---	---	---	---				
Special Education			54	3708	29	54	25	46	11	20	0	0	5.1	63	7.4	57	7.6	59	8.4	53	5.2	58	5.6	62				
Yes			54	3708	29	54	25	46	11	20	0	0	5.1	63	7.4	57	7.6	59	8.4	53	5.2	58	5.6	62				
No			1339	4285	137	10	1202	90	1025	77	177	13	6.4	80	9.7	75	10.3	80	11.2	70	7.2	80	7.1	78				
No Information Provided			1	---	---	---	---	---	---	---	---	---	---	---	---	---	---	---	---	---	---	---	---	---				
Gifted/Talented			0	---	---	---	---	---	---	---	---	---	---	---	---	---	---	---	---	---	---	---	---	---				
Participants			0	---	---	---	---	---	---	---	---	---	---	---	---	---	---	---	---	---	---	---	---	---				
Nonparticipants			1393	4263	166	12	1227	88	1036	74	177	13	6.3	79	9.6	74	10.2	79	11.1	69	7.2	80	7.0	78				
No Information Provided			1	---	---	---	---	---	---	---	---	---	---	---	---	---	---	---	---	---	---	---	---	---				
At-Risk			626	4091	115	18	511	82	378	60	35	6	6.0	75	8.8	68	9.6	74	10.5	65	6.7	75	6.5	73				
Yes			626	4091	115	18	511	82	378	60	35	6	6.0	75	8.8	68	9.6	74	10.5	65	6.7	75	6.5	73				
No			767	4403	51	7	716	93	658	86	142	19	6.6	83	10.2	79	10.8	83	11.6	72	7.5	83	7.4	82				
No Information Provided			1	---	---	---	---	---	---	---	---	---	---	---	---	---	---	---	---	---	---	---	---	---				
Career/Technical Education			4	---	---	---	---	---	---	---	---	---	---	---	---	---	---	---	---	---	---	---	---	---				
Participants			4	---	---	---	---	---	---	---	---	---	---	---	---	---	---	---	---	---	---	---	---	---				
Nonparticipants			1389	4263	166	12	1223	88	1033	74	177	13	6.3	79	9.6	74	10.2	79	11.1	69	7.2	80	7.0	78				
No Information Provided			1	---	---	---	---	---	---	---	---	---	---	---	---	---	---	---	---	---	---	---	---	---				



# STATE OF TEXAS ASSESSMENTS OF ACADEMIC READINESS Constructed Responses Summary Report

District: 108-807 IDEA PUBLIC SCH

## ENGLISH II First-Time Tested Students

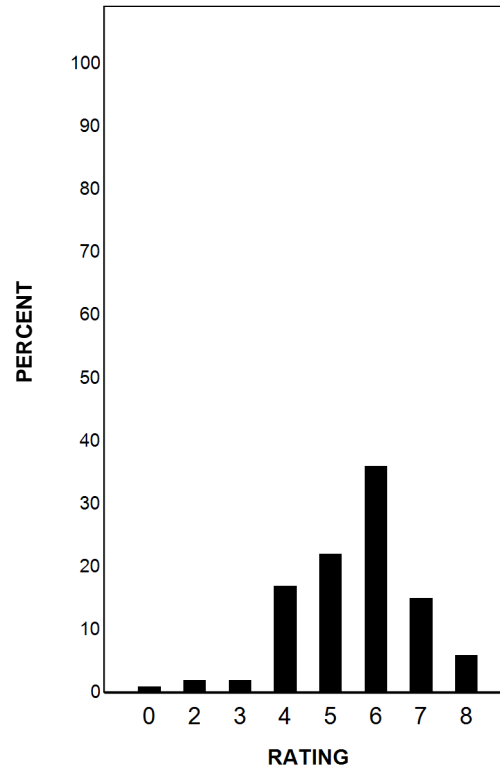
Report Date: SPRING 2018  
Date of Testing: SPRING 2018

--- = No Data Reported For Fewer Than Five Students

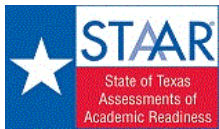
### Written Composition Rating Summary

#### Persuasive Composition

Rating	#	%
0	10	1
2	23	2
3	30	2
4	232	17
5	308	22
6	507	36
7	205	15
8	79	6
Total	1394	100



Each composition has been scored independently by two readers. The written composition rating of 0-8 represents the summation of these scores.



# STATE OF TEXAS ASSESSMENTS OF ACADEMIC READINESS

## Summary Report

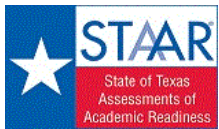
### ENGLISH II

#### Retested Students

District: 108-807 IDEA PUBLIC SCH

Report Date: SPRING 2018  
Date of Testing: SPRING 2018

Administration Summary			Number of Students Tested	Average Scale Score	Did Not Meet		Approaches		Meets		Masters		Results for Each Reporting Category											
													Number Percent		1		2		3		4		5	
												Understanding/ Analysis Across Genres		Understanding/ Analysis of Literary Texts		Understanding/ Analysis of Informational Texts		Composition		Revision		Editing		
Legend												Number of Points Possible												
--- = No Data Reported For Fewer Than Five Students												8		13		13		16		9		9		
												Number of Points Scored												
					#	%	#	%	#	%	#	%	#	%	#	%	#	%	#	%	#	%	#	%
<b>All Students</b>			70	3572	52	74	18	26	6	9	0	0	4.6	58	6.0	46	6.8	52	8.1	51	5.0	56	4.9	54
Male			45	3538	33	73	12	27	1	2	0	0	4.5	56	5.6	43	6.8	52	8.0	50	4.9	54	4.8	53
Female			25	3634	19	76	6	24	5	20	0	0	5.0	62	6.7	51	6.8	52	8.3	52	5.3	59	5.0	55
No Information Provided			0	---	---	---	---	---	---	---	---	---	---	---	---	---	---	---	---	---	---	---	---	---
Hispanic/Latino			70	3572	52	74	18	26	6	9	0	0	4.6	58	6.0	46	6.8	52	8.1	51	5.0	56	4.9	54
American Indian or Alaska Native			0	---	---	---	---	---	---	---	---	---	---	---	---	---	---	---	---	---	---	---	---	---
Asian			0	---	---	---	---	---	---	---	---	---	---	---	---	---	---	---	---	---	---	---	---	---
Black or African American			0	---	---	---	---	---	---	---	---	---	---	---	---	---	---	---	---	---	---	---	---	---
Native Hawaiian or Other Pacific Islander			0	---	---	---	---	---	---	---	---	---	---	---	---	---	---	---	---	---	---	---	---	---
White			0	---	---	---	---	---	---	---	---	---	---	---	---	---	---	---	---	---	---	---	---	---
Two or More Races			0	---	---	---	---	---	---	---	---	---	---	---	---	---	---	---	---	---	---	---	---	---
No Information Provided			0	---	---	---	---	---	---	---	---	---	---	---	---	---	---	---	---	---	---	---	---	---
Economically Disadvantaged			66	3567	49	74	17	26	5	8	0	0	4.7	59	5.9	46	6.7	52	8.0	50	5.0	55	4.9	54
Yes			66	3567	49	74	17	26	5	8	0	0	4.7	59	5.9	46	6.7	52	8.0	50	5.0	55	4.9	54
No			4	---	---	---	---	---	---	---	---	---	---	---	---	---	---	---	---	---	---	---	---	---
No Information Provided			0	---	---	---	---	---	---	---	---	---	---	---	---	---	---	---	---	---	---	---	---	---
Title I, Part A			70	3572	52	74	18	26	6	9	0	0	4.6	58	6.0	46	6.8	52	8.1	51	5.0	56	4.9	54
Participants			70	3572	52	74	18	26	6	9	0	0	4.6	58	6.0	46	6.8	52	8.1	51	5.0	56	4.9	54
Nonparticipants			0	---	---	---	---	---	---	---	---	---	---	---	---	---	---	---	---	---	---	---	---	---
No Information Provided			0	---	---	---	---	---	---	---	---	---	---	---	---	---	---	---	---	---	---	---	---	---
Migrant			0	---	---	---	---	---	---	---	---	---	---	---	---	---	---	---	---	---	---	---	---	---
Yes			0	---	---	---	---	---	---	---	---	---	---	---	---	---	---	---	---	---	---	---	---	---
No			70	3572	52	74	18	26	6	9	0	0	4.6	58	6.0	46	6.8	52	8.1	51	5.0	56	4.9	54
No Information Provided			0	---	---	---	---	---	---	---	---	---	---	---	---	---	---	---	---	---	---	---	---	---
Limited English Proficient			30	3587	24	80	6	20	1	3	0	0	5.2	65	5.5	42	7.2	55	8.6	54	5.0	56	4.6	51
Current LEP			30	3587	24	80	6	20	1	3	0	0	5.2	65	5.5	42	7.2	55	8.6	54	5.0	56	4.6	51
Non-LEP (Monitored 1st Year)			2	---	---	---	---	---	---	---	---	---	---	---	---	---	---	---	---	---	---	---	---	---
Non-LEP (Monitored 2nd Year)			2	---	---	---	---	---	---	---	---	---	---	---	---	---	---	---	---	---	---	---	---	---
Other Non-LEP			36	3589	24	67	12	33	5	14	0	0	4.4	55	6.4	50	6.8	52	7.8	49	5.1	57	5.1	56
No Information Provided			0	---	---	---	---	---	---	---	---	---	---	---	---	---	---	---	---	---	---	---	---	---
Bilingual			1	---	---	---	---	---	---	---	---	---	---	---	---	---	---	---	---	---	---	---	---	---
Participants			1	---	---	---	---	---	---	---	---	---	---	---	---	---	---	---	---	---	---	---	---	---
Nonparticipants			69	3574	51	74	18	26	6	9	0	0	4.6	58	6.0	46	6.8	52	8.2	51	5.0	56	4.9	54
No Information Provided			0	---	---	---	---	---	---	---	---	---	---	---	---	---	---	---	---	---	---	---	---	---
ESL			30	3574	24	80	6	20	1	3	0	0	5.0	62	5.5	43	6.8	52	8.6	54	5.0	55	4.8	53
Participants			30	3574	24	80	6	20	1	3	0	0	5.0	62	5.5	43	6.8	52	8.6	54	5.0	55	4.8	53
Nonparticipants			40	3571	28	70	12	30	5	13	0	0	4.4	55	6.3	48	6.7	52	7.8	49	5.1	56	4.9	55
No Information Provided			0	---	---	---	---	---	---	---	---	---	---	---	---	---	---	---	---	---	---	---	---	---
Special Education			19	3425	17	89	2	11	0	0	0	0	4.2	52	5.4	42	6.2	48	6.6	41	4.6	51	4.4	49
Yes			19	3425	17	89	2	11	0	0	0	0	4.2	52	5.4	42	6.2	48	6.6	41	4.6	51	4.4	49
No			51	3627	35	69	16	31	6	12	0	0	4.8	60	6.2	47	7.0	54	8.7	54	5.2	58	5.0	56
No Information Provided			0	---	---	---	---	---	---	---	---	---	---	---	---	---	---	---	---	---	---	---	---	---
Gifted/Talented			0	---	---	---	---	---	---	---	---	---	---	---	---	---	---	---	---	---	---	---	---	---
Participants			0	---	---	---	---	---	---	---	---	---	---	---	---	---	---	---	---	---	---	---	---	---
Nonparticipants			70	3572	52	74	18	26	6	9	0	0	4.6	58	6.0	46	6.8	52	8.1	51	5.0	56	4.9	54
No Information Provided			0	---	---	---	---	---	---	---	---	---	---	---	---	---	---	---	---	---	---	---	---	---
At-Risk			61	3589	44	72	17	28	5	8	0	0	4.8	60	6.0	46	7.0	54	8.2	51	5.1	57	4.8	53
Yes			61	3589	44	72	17	28	5	8	0	0	4.8	60	6.0	46	7.0	54	8.2	51	5.1	57	4.8	53
No			9	3455	8	89	1	11	1	11	0	0	3.3	42	6.0	46	5.2	40	8.0	50	4.2	47	5.2	58
No Information Provided			0	---	---	---	---	---	---	---	---	---	---	---	---	---	---	---	---	---	---	---	---	---
Career/Technical Education			0	---	---	---	---	---	---	---	---	---	---	---	---	---	---	---	---	---	---	---	---	---
Participants			0	---	---	---	---	---	---	---	---	---	---	---	---	---	---	---	---	---	---	---	---	---
Nonparticipants			70	3572	52	74	18	26	6	9	0	0	4.6	58	6.0	46	6.8	52	8.1	51	5.0	56	4.9	54
No Information Provided			0	---	---	---	---	---	---	---	---	---	---	---	---	---	---	---	---	---	---	---	---	---



STATE OF TEXAS ASSESSMENTS OF ACADEMIC READINESS  
Constructed Responses Summary Report  
ENGLISH II  
Retested Students

District: 108-807 IDEA PUBLIC SCH

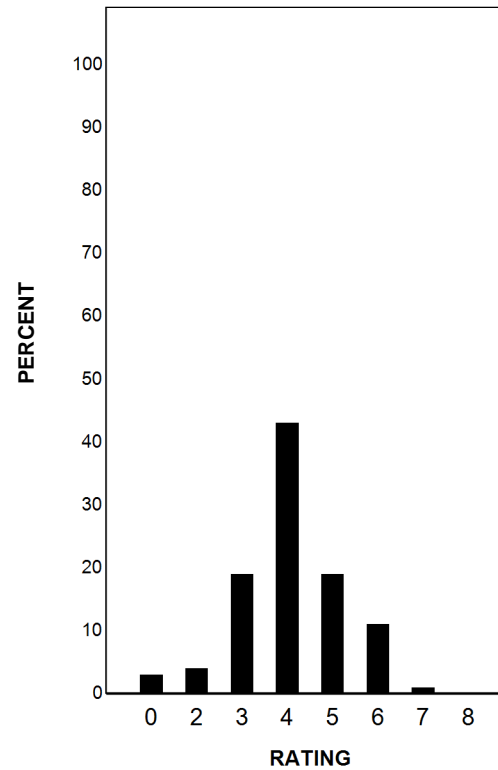
Report Date: SPRING 2018  
Date of Testing: SPRING 2018

--- = No Data Reported For Fewer Than Five Students

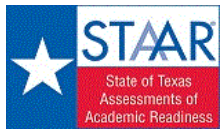
Written Composition Rating Summary

Persuasive Composition

Rating	#	%
0	2	3
2	3	4
3	13	19
4	30	43
5	13	19
6	8	11
7	1	1
8	0	0
Total	70	100



Each composition has been scored independently by two readers. The written composition rating of 0-8 represents the summation of these scores.



# STATE OF TEXAS ASSESSMENTS OF ACADEMIC READINESS

## Summary Report

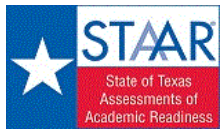
### U.S.HISTORY

#### All Students

District: 108-807 IDEA PUBLIC SCH

Report Date: SPRING 2018  
Date of Testing: SPRING 2018

Administration Summary			Number of Students Tested	Average Scale Score	Did Not Meet				Approaches				Meets				Masters				Results for Each Reporting Category							
					Number		Percent		#		%		#		%		#		%		#		%		1		2	
Students Tested			1315	100															History		Geography and Culture		Government and Citizenship		Economics, Science, Technology, and Society			
Students Not Tested																												
Absent			1	0																								
Other			0	0																								
Total Documents Submitted			1316	100																								
Legend			--- = No Data Reported For Fewer Than Five Students																									
			Number of Items Tested		Avg. # of Items / % Correct																							
			30		12		10		16		#		%		#		%		#		%		#		%			
<b>All Students</b>			1315	4458	35	3	1280	97	1096	83	691	53	22.8	76	9.6	80	7.2	72	12.5	78								
Male			607	4498	15	2	592	98	523	86	340	56	23.3	78	9.7	81	7.2	72	12.8	80								
Female			708	4423	20	3	688	97	573	81	351	50	22.4	75	9.6	80	7.2	72	12.2	77								
No Information Provided			0	---	---	---	---	---	---	---	---	---	---	---	---	---	---	---	---	---								
Hispanic/Latino			1257	4451	34	3	1223	97	1045	83	658	52	22.8	76	9.6	80	7.2	72	12.5	78								
American Indian or Alaska Native			2	---	---	---	---	---	---	---	---	---	---	---	---	---	---	---	---	---								
Asian			16	4869	0	0	16	100	15	94	10	63	25.3	84	10.6	89	8.1	81	13.7	86								
Black or African American			13	4470	0	0	13	100	10	77	7	54	23.1	77	10.2	85	6.9	69	12.9	81								
Native Hawaiian or Other Pacific Islander			0	---	---	---	---	---	---	---	---	---	---	---	---	---	---	---	---	---								
White			25	4403	1	4	24	96	22	88	13	52	22.4	75	9.7	81	7.4	74	11.8	74								
Two or More Races			2	---	---	---	---	---	---	---	---	---	---	---	---	---	---	---	---	---								
No Information Provided			0	---	---	---	---	---	---	---	---	---	---	---	---	---	---	---	---	---								
Economically Disadvantaged			Yes	1127	4448	29	3	1098	97	931	83	582	52	22.7	76	9.5	80	7.2	72	12.4	78							
			No	188	4516	6	3	182	97	165	88	109	58	23.4	78	10.0	83	7.3	73	12.8	80							
			No Information Provided	0	---	---	---	---	---	---	---	---	---	---	---	---	---	---	---	---								
Title I, Part A			Participants	1310	4459	33	3	1277	97	1094	84	689	53	22.8	76	9.6	80	7.2	72	12.5	78							
			Nonparticipants	5	3991	2	40	3	60	2	40	2	40	17.0	57	6.2	52	7.8	78	8.6	54							
			No Information Provided	0	---	---	---	---	---	---	---	---	---	---	---	---	---	---	---	---								
Migrant			Yes	2	---	---	---	---	---	---	---	---	---	---	---	---	---	---	---	---								
			No	1313	4457	35	3	1278	97	1094	83	689	52	22.8	76	9.6	80	7.2	72	12.5	78							
			No Information Provided	0	---	---	---	---	---	---	---	---	---	---	---	---	---	---	---	---								
Limited English Proficient			Current LEP	220	4189	16	7	204	93	143	65	72	33	20.2	67	8.6	72	6.4	64	11.1	69							
			Non-LEP (Monitored 1st Year)	56	4517	1	2	55	98	50	89	32	57	23.8	79	9.2	77	7.3	73	13.3	83							
			Non-LEP (Monitored 2nd Year)	48	4502	0	0	48	100	40	83	27	56	23.1	77	10.0	83	7.4	74	12.9	81							
			Other Non-LEP	991	4512	18	2	973	98	863	87	560	57	23.3	78	9.8	82	7.4	74	12.8	80							
			No Information Provided	0	---	---	---	---	---	---	---	---	---	---	---	---	---	---	---	---								
Bilingual			Participants	0	---	---	---	---	---	---	---	---	---	---	---	---	---	---	---	---								
			Nonparticipants	1315	4458	35	3	1280	97	1096	83	691	53	22.8	76	9.6	80	7.2	72	12.5	78							
			No Information Provided	0	---	---	---	---	---	---	---	---	---	---	---	---	---	---	---	---								
ESL			Participants	229	4216	13	6	216	94	155	68	77	34	20.5	68	8.7	72	6.4	64	11.3	71							
			Nonparticipants	1086	4508	22	2	1064	98	941	87	614	57	23.3	78	9.8	82	7.4	74	12.8	80							
			No Information Provided	0	---	---	---	---	---	---	---	---	---	---	---	---	---	---	---	---								
Special Education			Yes	54	3927	11	20	43	80	22	41	9	17	17.1	57	7.9	66	5.0	50	8.9	56							
			No	1261	4480	24	2	1237	98	1074	85	682	54	23.0	77	9.7	81	7.3	73	12.7	79							
			No Information Provided	0	---	---	---	---	---	---	---	---	---	---	---	---	---	---	---	---								
Gifted/Talented			Participants	0	---	---	---	---	---	---	---	---	---	---	---	---	---	---	---	---								
			Nonparticipants	1315	4458	35	3	1280	97	1096	83	691	53	22.8	76	9.6	80	7.2	72	12.5	78							
			No Information Provided	0	---	---	---	---	---	---	---	---	---	---	---	---	---	---	---	---								
At-Risk			Yes	497	4258	27	5	470	95	341	69	181	36	20.8	69	8.8	73	6.5	65	11.6	72							
			No	818	4579	8	1	810	99	755	92	510	62	24.0	80	10.1	84	7.6	76	13.1	82							
			No Information Provided	0	---	---	---	---	---	---	---	---	---	---	---	---	---	---	---	---								
Career/Technical Education			Participants	1	---	---	---	---	---	---	---	---	---	---	---	---	---	---	---	---								
			Nonparticipants	1314	4458	35	3	1279	97	1095	83	691	53	22.8	76	9.6	80	7.2	72	12.5	78							
			No Information Provided	0	---	---	---	---	---	---	---	---	---	---	---	---	---	---	---	---								



# STATE OF TEXAS ASSESSMENTS OF ACADEMIC READINESS

## Summary Report

### U.S.HISTORY

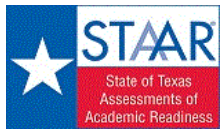
#### First-Time Tested Students

District: 108-807 IDEA PUBLIC SCH

Report Date: SPRING 2018  
Date of Testing: SPRING 2018

Administration Summary			Number of Students Tested	Average Scale Score	Results for Each Reporting Category																
					Number	Percent	1		2		3		4		History		Geography and Culture		Government and Citizenship		Economics, Science, Technology, and Society
Students Tested		Did Not Meet					Approaches		Meets		Masters		Number of Items Tested		30		12		10		16
Legend		30			12		10		16		Avg. # of Items / % Correct										
--- = No Data Reported For Fewer Than Five Students		#			%	#	%	#	%	#	%	#	%	#	%	#	%	#	%	#	%
<b>All Students</b>		1312			4460	32	2	1280	98	1096	84	691	53	22.8	76	9.6	80	7.2	72	12.5	78
<b>Male</b>		607			4498	15	2	592	98	523	86	340	56	23.3	78	9.7	81	7.2	72	12.8	80
<b>Female</b>		705			4427	17	2	688	98	573	81	351	50	22.4	75	9.6	80	7.2	72	12.3	77
<b>No Information Provided</b>		0			---	---	---	---	---	---	---	---	---	---	---	---	---	---	---	---	---
<b>Hispanic/Latino</b>		1254			4453	31	2	1223	98	1045	83	658	52	22.8	76	9.6	80	7.2	72	12.5	78
<b>American Indian or Alaska Native</b>		2	---	---	---	---	---	---	---	---	---	---	---	---	---	---	---	---	---		
<b>Asian</b>		16	4869	0	0	16	100	15	94	10	63	25.3	84	10.6	89	8.1	81	13.7	86		
<b>Black or African American</b>		13	4470	0	0	13	100	10	77	7	54	23.1	77	10.2	85	6.9	69	12.9	81		
<b>Native Hawaiian or Other Pacific Islander</b>		0	---	---	---	---	---	---	---	---	---	---	---	---	---	---	---	---	---		
<b>White</b>		25	4403	1	4	24	96	22	88	13	52	22.4	75	9.7	81	7.4	74	11.8	74		
<b>Two or More Races</b>		2	---	---	---	---	---	---	---	---	---	---	---	---	---	---	---	---	---		
<b>No Information Provided</b>		0	---	---	---	---	---	---	---	---	---	---	---	---	---	---	---	---	---		
<b>Economically Disadvantaged</b>	Yes	1125	4450	27	2	1098	98	931	83	582	52	22.7	76	9.6	80	7.2	72	12.5	78		
	No	187	4522	5	3	182	97	165	88	109	58	23.4	78	10.0	84	7.3	73	12.9	81		
	No Information Provided	0	---	---	---	---	---	---	---	---	---	---	---	---	---	---	---	---	---		
<b>Title I, Part A</b>	Participants	1308	4461	31	2	1277	98	1094	84	689	53	22.8	76	9.6	80	7.2	72	12.5	78		
	Nonparticipants	4	---	---	---	---	---	---	---	---	---	---	---	---	---	---	---	---	---		
	No Information Provided	0	---	---	---	---	---	---	---	---	---	---	---	---	---	---	---	---	---		
<b>Migrant</b>	Yes	2	---	---	---	---	---	---	---	---	---	---	---	---	---	---	---	---	---		
	No	1310	4460	32	2	1278	98	1094	84	689	53	22.8	76	9.6	80	7.2	72	12.5	78		
	No Information Provided	0	---	---	---	---	---	---	---	---	---	---	---	---	---	---	---	---	---		
<b>Limited English Proficient</b>	Current LEP	219	4193	15	7	204	93	143	65	72	33	20.2	67	8.6	72	6.4	64	11.1	70		
	Non-LEP (Monitored 1st Year)	56	4517	1	2	55	98	50	89	32	57	23.8	79	9.2	77	7.3	73	13.3	83		
	Non-LEP (Monitored 2nd Year)	48	4502	0	0	48	100	40	83	27	56	23.1	77	10.0	83	7.4	74	12.9	81		
	Other Non-LEP	989	4514	16	2	973	98	863	87	560	57	23.3	78	9.8	82	7.4	74	12.8	80		
	No Information Provided	0	---	---	---	---	---	---	---	---	---	---	---	---	---	---	---	---	---		
<b>Bilingual</b>	Participants	0	---	---	---	---	---	---	---	---	---	---	---	---	---	---	---	---	---		
	Nonparticipants	1312	4460	32	2	1280	98	1096	84	691	53	22.8	76	9.6	80	7.2	72	12.5	78		
	No Information Provided	0	---	---	---	---	---	---	---	---	---	---	---	---	---	---	---	---	---		
<b>ESL</b>	Participants	228	4220	12	5	216	95	155	68	77	34	20.6	69	8.7	72	6.4	64	11.4	71		
	Nonparticipants	1084	4510	20	2	1064	98	941	87	614	57	23.3	78	9.8	82	7.4	74	12.8	80		
	No Information Provided	0	---	---	---	---	---	---	---	---	---	---	---	---	---	---	---	---	---		
<b>Special Education</b>	Yes	52	3947	9	17	43	83	22	42	9	17	17.3	58	8.0	67	5.1	51	9.2	58		
	No	1260	4481	23	2	1237	98	1074	85	682	54	23.0	77	9.7	81	7.3	73	12.7	79		
	No Information Provided	0	---	---	---	---	---	---	---	---	---	---	---	---	---	---	---	---	---		
<b>Gifted/Talented</b>	Participants	0	---	---	---	---	---	---	---	---	---	---	---	---	---	---	---	---	---		
	Nonparticipants	1312	4460	32	2	1280	98	1096	84	691	53	22.8	76	9.6	80	7.2	72	12.5	78		
	No Information Provided	0	---	---	---	---	---	---	---	---	---	---	---	---	---	---	---	---	---		
<b>At-Risk</b>	Yes	494	4263	24	5	470	95	341	69	181	37	20.9	70	8.8	74	6.5	65	11.6	73		
	No	818	4579	8	1	810	99	755	92	510	62	24.0	80	10.1	84	7.6	76	13.1	82		
	No Information Provided	0	---	---	---	---	---	---	---	---	---	---	---	---	---	---	---	---	---		
<b>Career/Technical Education</b>	Participants	1	---	---	---	---	---	---	---	---	---	---	---	---	---	---	---	---	---		
	Nonparticipants	1311	4460	32	2	1279	98	1095	84	691	53	22.8	76	9.6	80	7.2	72	12.5	78		
	No Information Provided	0	---	---	---	---	---	---	---	---	---	---	---	---	---	---	---	---	---		





# STATE OF TEXAS ASSESSMENTS OF ACADEMIC READINESS

## Summary Report

### U.S.HISTORY

#### Retested Students

District: 108-807 IDEA PUBLIC SCH

Report Date: SPRING 2018  
Date of Testing: SPRING 2018

Administration Summary			Number of Students Tested	Average Scale Score	Did Not Meet		Approaches		Meets		Masters		Results for Each Reporting Category										
													1	2	3	4							
Number	Percent	History											Geography and Culture	Government and Citizenship	Economics, Science, Technology, and Society	Number of Items Tested							
																30	12	10	16	Avg. # of Items / % Correct			
Legend													---										
---			= No Data Reported For Fewer Than Five Students																				
			#	%	#	%	#	%	#	%	#	%	#	%	#	%							
<b>All Students</b>			3	---	---	---	---	---	---	---	---	---	---	---	---	---	---						
Male			0	---	---	---	---	---	---	---	---	---	---	---	---	---	---						
Female			3	---	---	---	---	---	---	---	---	---	---	---	---	---	---						
No Information Provided			0	---	---	---	---	---	---	---	---	---	---	---	---	---	---						
Hispanic/Latino			3	---	---	---	---	---	---	---	---	---	---	---	---	---	---						
American Indian or Alaska Native			0	---	---	---	---	---	---	---	---	---	---	---	---	---	---						
Asian			0	---	---	---	---	---	---	---	---	---	---	---	---	---	---						
Black or African American			0	---	---	---	---	---	---	---	---	---	---	---	---	---	---						
Native Hawaiian or Other Pacific Islander			0	---	---	---	---	---	---	---	---	---	---	---	---	---	---						
White			0	---	---	---	---	---	---	---	---	---	---	---	---	---	---						
Two or More Races			0	---	---	---	---	---	---	---	---	---	---	---	---	---	---						
No Information Provided			0	---	---	---	---	---	---	---	---	---	---	---	---	---	---						
Economically Disadvantaged			Yes	2	---	---	---	---	---	---	---	---	---	---	---	---	---						
			No	1	---	---	---	---	---	---	---	---	---	---	---	---	---						
			No Information Provided	0	---	---	---	---	---	---	---	---	---	---	---	---	---						
Title I, Part A			Participants	2	---	---	---	---	---	---	---	---	---	---	---	---	---						
			Nonparticipants	1	---	---	---	---	---	---	---	---	---	---	---	---	---						
			No Information Provided	0	---	---	---	---	---	---	---	---	---	---	---	---	---						
Migrant			Yes	0	---	---	---	---	---	---	---	---	---	---	---	---	---						
			No	3	---	---	---	---	---	---	---	---	---	---	---	---	---						
			No Information Provided	0	---	---	---	---	---	---	---	---	---	---	---	---	---						
Limited English Proficient			Current LEP	1	---	---	---	---	---	---	---	---	---	---	---	---	---						
			Non-LEP (Monitored 1st Year)	0	---	---	---	---	---	---	---	---	---	---	---	---	---						
			Non-LEP (Monitored 2nd Year)	0	---	---	---	---	---	---	---	---	---	---	---	---	---						
			Other Non-LEP	2	---	---	---	---	---	---	---	---	---	---	---	---	---						
			No Information Provided	0	---	---	---	---	---	---	---	---	---	---	---	---	---						
Bilingual			Participants	0	---	---	---	---	---	---	---	---	---	---	---	---	---						
			Nonparticipants	3	---	---	---	---	---	---	---	---	---	---	---	---	---						
			No Information Provided	0	---	---	---	---	---	---	---	---	---	---	---	---	---						
ESL			Participants	1	---	---	---	---	---	---	---	---	---	---	---	---	---						
			Nonparticipants	2	---	---	---	---	---	---	---	---	---	---	---	---	---						
			No Information Provided	0	---	---	---	---	---	---	---	---	---	---	---	---	---						
Special Education			Yes	2	---	---	---	---	---	---	---	---	---	---	---	---	---						
			No	1	---	---	---	---	---	---	---	---	---	---	---	---	---						
			No Information Provided	0	---	---	---	---	---	---	---	---	---	---	---	---	---						
Gifted/Talented			Participants	0	---	---	---	---	---	---	---	---	---	---	---	---	---						
			Nonparticipants	3	---	---	---	---	---	---	---	---	---	---	---	---	---						
			No Information Provided	0	---	---	---	---	---	---	---	---	---	---	---	---	---						
At-Risk			Yes	3	---	---	---	---	---	---	---	---	---	---	---	---	---						
			No	0	---	---	---	---	---	---	---	---	---	---	---	---	---						
			No Information Provided	0	---	---	---	---	---	---	---	---	---	---	---	---	---						
Career/Technical Education			Participants	0	---	---	---	---	---	---	---	---	---	---	---	---	---						
			Nonparticipants	3	---	---	---	---	---	---	---	---	---	---	---	---	---						
			No Information Provided	0	---	---	---	---	---	---	---	---	---	---	---	---	---						